

For Research Use Only

STAMPB Recombinant monoclonal antibody

Catalog Number: 86601-3-RR



Basic Information

Catalog Number: 86601-3-RR	GenBank Accession Number: BC007682	Purification Method: Protein A purification
Size: 100ul , Concentration: 1000 µg/ml by Nanodrop;	GeneID (NCBI): 10617	CloneNo.: 251545B3
Source: Rabbit	UNIPROT ID: O95630	Recommended Dilutions: WB: 1:5000-1:50000 IF/ICC: 1:50-1:500
Isotype: IgG	Full Name: STAM binding protein	
Immunogen Catalog Number: AG1895	Calculated MW: 48 kDa	
	Observed MW: 48 kDa	

Applications

Tested Applications: WB, IF/ICC, ELISA	Positive Controls:
Species Specificity: human, mouse, rat	WB : A549 cells, NIH/3T3 cells, rat brain tissue, Jurkat cells, SW480 cells, K-562 cells, mouse brain tissue IF/ICC : K-562 cells,

Background Information

STAM-binding protein (STAMPB) is also named AMSH. STAMPB, a member of the Jab1/MPN metalloenzyme family of deubiquitinating enzymes (DUBs), specifically cleaves K63-linked polyubiquitination chains from substrates (PMID: 15314065, PMID: 26601948). STAMPB is implicated in the endosome-lysosome pathway and shuttles ubiquitinated substrate proteins to lysosomes for degradation (PMID: 10383417, PMID: 24151880). STAMPB regulates protein degradation by binding to the ESCRT-0 protein STAM and the charged multivesicular body proteins of the ESCRT-III complex (PMID: 20159979). STAMPB is implicated in the inflammatory response by promoting the deubiquitination and stabilization of NALP7 and increasing the activity of inflammasomes (PMID: 28492230). STAMPB expression was increased in the cytoplasm of tumor cells from LUAD patients. STAMPB overexpression promoted cell migration and invasion, whereas STAMPB knockdown attenuated these processes in LUAD cells after epidermal growth factor treatment (PMID: 3410245).

Storage

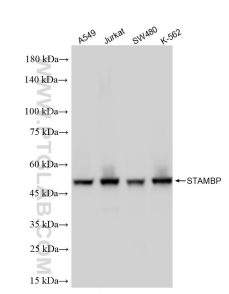
Storage:
Store at -20°C. Stable for one year after shipment.
Storage Buffer:
PBS with 0.02% sodium azide and 50% glycerol, pH7.3
Aliquoting is unnecessary for -20°C storage

*** 20ul sizes contain 0.1% BSA

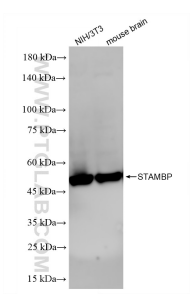
For technical support and original validation data for this product please contact:
T: 1 (888) 4PTGLAB (1-888-478-4522) (toll free in USA), or 1(312) 455-8498 (outside USA)
E: proteintech@ptglab.com
W: ptglab.com

This product is exclusively available under Proteintech Group brand and is not available to purchase from any other manufacturer.

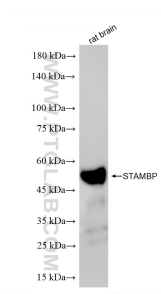
Selected Validation Data



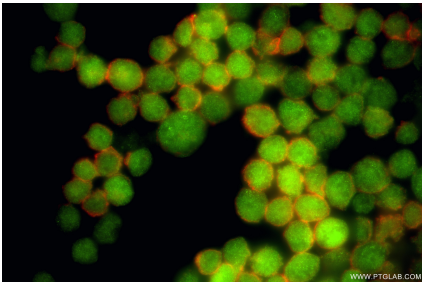
Various lysates were subjected to SDS PAGE followed by western blot with 86601-3-RR (STAMBP antibody) at dilution of 1:10000 incubated at room temperature for 1.5 hours.



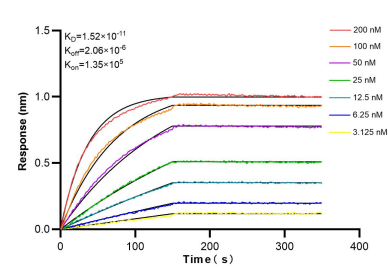
Various lysates were subjected to SDS PAGE followed by western blot with 86601-3-RR (STAMBP antibody) at dilution of 1:10000 incubated at room temperature for 1.5 hours.



Rat brain tissue was subjected to SDS PAGE followed by western blot with 86601-3-RR (STAMBP antibody) at dilution of 1:10000 incubated at room temperature for 1.5 hours.



Immunofluorescent analysis of (4% PFA) fixed K-562 cells using STAMBP antibody (86601-3-RR, Clone: 251545B3) at dilution of 1:200 and CoraLite®488-Conjugated Goat Anti-Rabbit IgG(H+L) (SA00013-2), CL594-Phalloidin (red).



Biolayer interferometry (BLI) kinetic assays of 86601-3-RR against Human STAMBP were performed. The affinity constant is 15.2 pM.