

For Research Use Only

Rat CCL20/MIP-3 alpha Recombinant monoclonal antibody, PBS Only

Catalog Number:86607-3-PBS



Basic Information

Catalog Number: 86607-3-PBS	GenBank Accession Number: NM_019233.1	Purification Method: Protein A purification
Size: 100ug , Concentration: 1 mg/ml by Nanodrop;	GeneID (NCBI): 29538	CloneNo.: 250116E12
Source: Rabbit	UNIPROT ID: P97884	
Isotype: IgG	Full Name: chemokine (C-C motif) ligand 20	
Immunogen Catalog Number: EG3237	Calculated MW: 11 kDa	

Applications

Tested Applications:
WB, IHC, IF/ICC, Indirect ELISA

Species Specificity:
rat

Background Information

CCL20, also known as macrophage infiltrating factor protein 3a, is a C-C chemokine that specifically binds to the receptor CCR6. CCL20 is produced in various tissues and by a wide range of immune cells, including neutrophils, natural killer cells, T-helper type 17 (Th17) cells, B cells, and various antigen-presenting cells, such as dendritic cells (DCs), Langerhans cells, and macrophages. Increased expression of CCL20 is likely involved in the increased recruitment of dendritic cells observed in fibroinflammatory diseases such as chronic obstructive pulmonary disease (COPD). CCL20 expression is increased by the proinflammatory cytokine IL-1 beta.

Storage

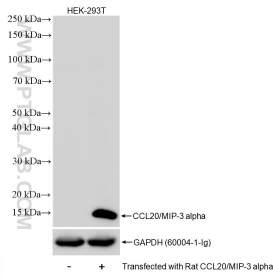
Storage:
Store at -80°C.

Storage Buffer:
PBS only, pH7.3

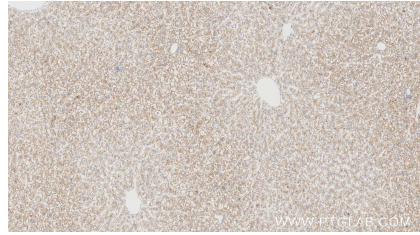
For technical support and original validation data for this product please contact:
T: 1 (888) 4PTGLAB (1-888-478-4522) (toll free in USA), or 1(312) 455-8498 (outside USA) E: proteintech@ptglab.com
W: ptglab.com

This product is exclusively available under Proteintech Group brand and is not available to purchase from any other manufacturer.

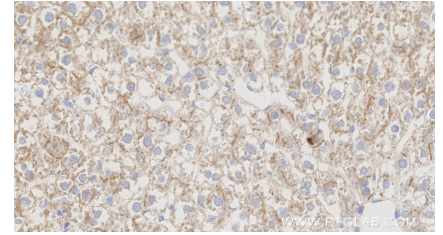
Selected Validation Data



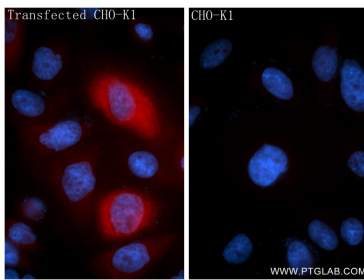
Non-transfected and rat CCL20-transfected HEK-293T cells were subjected to SDS PAGE followed by western blot with 86607-3-RR (CCL20/MIP-3 alpha antibody) at dilution of 1:2000 incubated at room temperature for 1.5 hours. This data was developed using the same antibody clone with 86607-3-PBS in a different storage buffer formulation.



Immunohistochemical analysis of paraffin-embedded rat liver tissue slide using 86607-3-RR (CCL20/MIP-3 alpha antibody) at dilution of 1:1000 (under 10x lens). Heat mediated antigen retrieval with Tris-EDTA buffer (pH 9.0). This data was developed using the same antibody clone with 86607-3-PBS in a different storage buffer formulation.



Immunohistochemical analysis of paraffin-embedded rat liver tissue slide using 86607-3-RR (CCL20/MIP-3 alpha antibody) at dilution of 1:1000 (under 40x lens). Heat mediated antigen retrieval with Tris-EDTA buffer (pH 9.0). This data was developed using the same antibody clone with 86607-3-PBS in a different storage buffer formulation.



Immunofluorescent analysis of (4% PFA) fixed Transfected CHO-K1 using CCL20/MIP-3 alpha antibody (86607-3-RR, Clone: 250116E12) at dilution of 1:400 and Coralite®594-Conjugated Goat Anti-Rabbit IgG(H+L) (SA00013-4). This data was developed using the same antibody clone with 86607-3-PBS in a different storage buffer formulation.