

For Research Use Only

# CCL20/MIP-3 alpha Recombinant monoclonal antibody

Catalog Number:86607-3-RR



## Basic Information

<b>Catalog Number:</b> 86607-3-RR	<b>GenBank Accession Number:</b> NM_019233.1	<b>Purification Method:</b> Protein A purification
<b>Size:</b> 100ul , Concentration: 1000 µg/ml by Nanodrop;	<b>GeneID (NCBI):</b> 29538	<b>CloneNo.:</b> 250116E12
<b>Source:</b> Rabbit	<b>UNIPROT ID:</b> P97884	<b>Recommended Dilutions:</b> WB: 1:1000-1:4000 IHC: 1:500-1:2000 IF/ICC: 1:200-1:800
<b>Isotype:</b> IgG	<b>Full Name:</b> chemokine (C-C motif) ligand 20	
<b>Immunogen Catalog Number:</b> EG3237	<b>Calculated MW:</b> 11 kDa	

## Applications

**Tested Applications:**  
WB, IHC, IF/ICC, ELISA

**Species Specificity:**  
rat

**Note-IHC: suggested antigen retrieval with TE buffer pH 9.0; (\*) Alternatively, antigen retrieval may be performed with citrate buffer pH 6.0**

**Positive Controls:**

**WB :** Transfected with Rat CCL20/MIP-3 alpha HEK-293T cells,

**IHC :** rat liver tissue, rat colon tissue

**IF/ICC :** Transfected CHO-K1,

## Background Information

CCL20, also known as macrophage infiltrating factor protein 3a, is a C-C chemokine that specifically binds to the receptor CCR6. CCL20 is produced in various tissues and by a wide range of immune cells, including neutrophils, natural killer cells, T-helper type 17 (Th17) cells, B cells, and various antigen-presenting cells, such as dendritic cells (DCs), Langerhans cells, and macrophages. Increased expression of CCL20 is likely involved in the increased recruitment of dendritic cells observed in fibroinflammatory diseases such as chronic obstructive pulmonary disease (COPD). CCL20 expression is increased by the proinflammatory cytokine IL-1 beta.

## Storage

**Storage:**

Store at -20°C. Stable for one year after shipment.

**Storage Buffer:**

PBS with 0.02% sodium azide and 50% glycerol, pH7.3

Aliquoting is unnecessary for -20°C storage

\*\*\* 20ul sizes contain 0.1% BSA

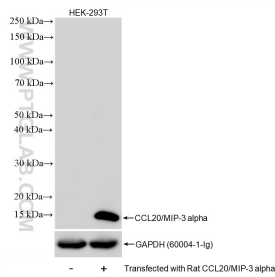
For technical support and original validation data for this product please contact:

T: 1 (888) 4PTGLAB (1-888-478-4522) (toll free in USA), or 1(312) 455-8498 (outside USA)

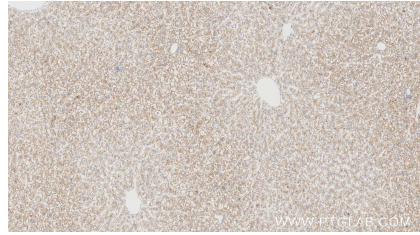
E: [proteintech@ptglab.com](mailto:proteintech@ptglab.com)  
W: [ptglab.com](http://ptglab.com)

This product is exclusively available under Proteintech Group brand and is not available to purchase from any other manufacturer.

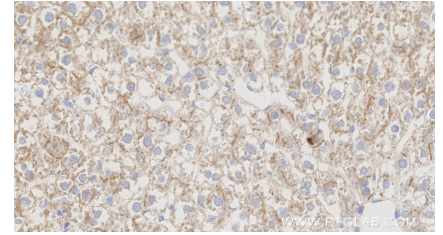
## Selected Validation Data



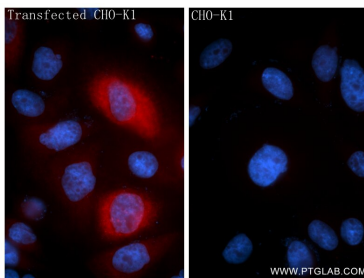
Non-transfected and rat CCL20-transfected HEK-293T cells were subjected to SDS PAGE followed by western blot with 86607-3-RR (CCL20/MIP-3 alpha antibody) at dilution of 1:2000 incubated at room temperature for 1.5 hours.



Immunohistochemical analysis of paraffin-embedded rat liver tissue slide using 86607-3-RR (CCL20/MIP-3 alpha antibody) at dilution of 1:1000 (under 10x lens). Heat mediated antigen retrieval with Tris-EDTA buffer (pH 9.0).



Immunohistochemical analysis of paraffin-embedded rat liver tissue slide using 86607-3-RR (CCL20/MIP-3 alpha antibody) at dilution of 1:1000 (under 40x lens). Heat mediated antigen retrieval with Tris-EDTA buffer (pH 9.0).



Immunofluorescent analysis of (4% PFA) fixed Transfected CHO-K1 using CCL20/MIP-3 alpha antibody (86607-3-RR, Clone: 250116E12 ) at dilution of 1:400 and Coralite®594-Conjugated Goat Anti-Rabbit IgG(H+L) (SA00013-4).