

For Research Use Only

GFPT2 Recombinant monoclonal antibody

Catalog Number:86609-3-RR



Basic Information

Catalog Number: 86609-3-RR	GenBank Accession Number: BC000012	Purification Method: Protein A purification
Size: 100ul , Concentration: 1000 µg/ml by Nanodrop;	GeneID (NCBI): 9945	CloneNo.: 251454E5
Source: Rabbit	UNIPROT ID: O94808	Recommended Dilutions: WB: 1:5000-1:50000 IF/ICC: 1:50-1:500
Isotype: IgG	Full Name: glutamine-fructose-6-phosphate transaminase 2	
Immunogen Catalog Number: AG7275	Calculated MW: 77 kDa	
	Observed MW: 75-77 kDa	

Applications

Tested Applications: WB, IF/ICC, ELISA	Positive Controls:
Species Specificity: human, mouse	WB : NIH/3T3 cells, A375 cells IF/ICC : NIH/3T3 cells, A375 cells

Background Information

GFPT2 (Glutamine-fructose-6-phosphate transaminase 2) is a rate-limiting enzyme in hexosamine biosynthesis involved in the occurrence and progress of many cancers (PMID: 35330716, 14764791). GFPT2 plays an important role in the metabolic activity of cells, especially in their glucose metabolism. GFPT2 expression was highly correlated with EMT-related factors (PMID: 37395335). High GFPT2 expression is associated with poor prognosis in various tumors, including lung adenocarcinoma, colorectal cancer, leiomyosarcoma, and serous ovarian cancer.

Storage

Storage:
Store at -20°C. Stable for one year after shipment.
Storage Buffer:
PBS with 0.02% sodium azide and 50% glycerol, pH7.3
Aliquoting is unnecessary for -20°C storage

*** 20ul sizes contain 0.1% BSA

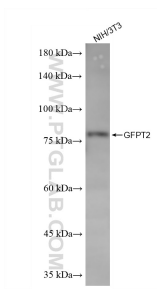
For technical support and original validation data for this product please contact:

T: 1 (888) 4PTGLAB (1-888-478-4522) (toll free in USA), or 1(312) 455-8498 (outside USA)

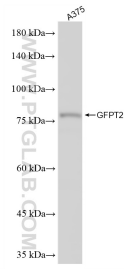
E: proteintech@ptglab.com
W: ptglab.com

This product is exclusively available under Proteintech Group brand and is not available to purchase from any other manufacturer.

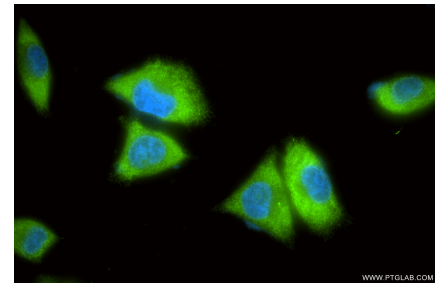
Selected Validation Data



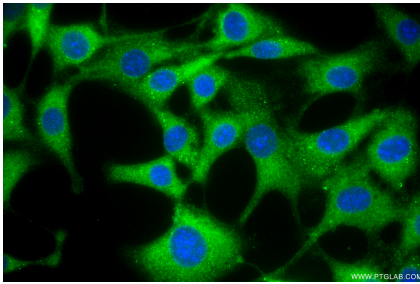
NIH/3T3 cells were subjected to SDS PAGE followed by western blot with 86609-3-RR (GFPT2 antibody) at dilution of 1:10000 incubated at room temperature for 1.5 hours.



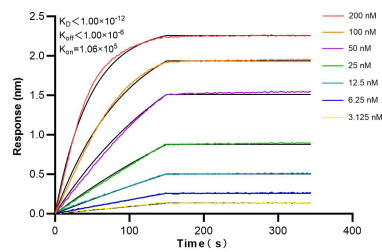
A375 cells were subjected to SDS PAGE followed by western blot with 86609-3-RR (GFPT2 antibody) at dilution of 1:10000 incubated at room temperature for 1.5 hours.



Immunofluorescent analysis of (4% PFA) fixed A375 cells using GFPT2 antibody (86609-3-RR, Clone: 251454E5) at dilution of 1:200 and CoraLite®488-Conjugated Goat Anti-Rabbit IgG(H+L) (SA00013-2).



Immunofluorescent analysis of (-20°C Methanol) fixed NIH/3T3 cells using GFPT2 antibody (86609-3-RR, Clone: 251454E5) at dilution of 1:200 and CoraLite®488-Conjugated Goat Anti-Rabbit IgG(H+L) (SA00013-2).



Biolayer interferometry (BLI) kinetic assays of 86609-3-RR against Human GFPT2 were performed. The affinity constant is below 1 pM.