

For Research Use Only

# CUEDC2 Recombinant monoclonal antibody, PBS Only (Detector)

Catalog Number: 86610-2-PBS



## Basic Information

<b>Catalog Number:</b> 86610-2-PBS	<b>GenBank Accession Number:</b> BC000262	<b>Purification Method:</b> Protein A purification
<b>Size:</b> 100ug, Concentration: 1 mg/ml by Nanodrop;	<b>GeneID (NCBI):</b> 79004	<b>CloneNo.:</b> 251583E6
<b>Source:</b> Rabbit	<b>UNIPROT ID:</b> Q9H467	
<b>Isotype:</b> IgG	<b>Full Name:</b> CUE domain containing 2	
<b>Immunogen Catalog Number:</b> AG13847	<b>Calculated MW:</b> 287 aa, 32 kDa	
	<b>Observed MW:</b> 32 kDa	

## Applications

**Tested Applications:**  
WB, IHC, Cytometric bead array, Indirect ELISA

**Species Specificity:**  
human

## Product Information

86610-2-PBS targets CUEDC2 as part of a matched antibody pair:

MP02553-1: 86610-1-PBS capture and 86610-2-PBS detection (validated in Cytometric bead array)

Unconjugated rabbit recombinant monoclonal antibody in PBS only (BSA and azide free) storage buffer at a concentration of 1 mg/mL, ready for conjugation. Created using Proteintech's proprietary in-house recombinant technology. Recombinant production enables unrivalled batch-to-batch consistency, easy scale-up, and future security of supply.

This conjugation ready format makes antibodies ideal for use in many applications including: ELISAs, multiplex assays requiring matched pairs, mass cytometry, and multiplex imaging applications. Antibody use should be optimized by the end user for each application and assay.

## Background Information

CUE domain-containing 2 (CUEDC2) is a ubiquitin-binding motif-containing protein involved in the regulation of the cell cycle, inflammation, and tumorigenesis. It is ubiquitously expressed in human tissues and organs, not only highly expressed in the normal brain, heart and testis, but also some kinds of cancers, such as breast, ovarian and kidney cancers. CUEDC2 could act as an adaptor protein to target I $\kappa$ B kinase (IKK) for dephosphorylation and inactivation by recruiting protein phosphatase (PP1), and thus repressed activation of the transcription factor NF- $\kappa$ B. Moreover, CUEDC2, is a key factor in endocrine resistance in breast cancer.

## Storage

**Storage:**  
Store at -80°C.  
**Storage Buffer:**  
PBS only, pH7.3

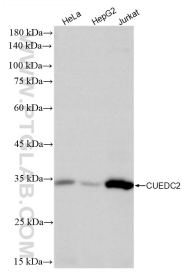
For technical support and original validation data for this product please contact:

T: 1 (888) 4PTGLAB (1-888-478-4522) (toll free in USA), or 1(312) 455-8498 (outside USA)

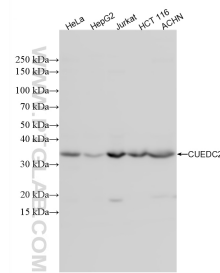
E: [proteintech@ptglab.com](mailto:proteintech@ptglab.com)  
W: [ptglab.com](http://ptglab.com)

**This product is exclusively available under Proteintech Group brand and is not available to purchase from any other manufacturer.**

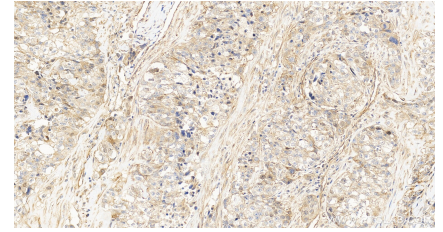
## Selected Validation Data



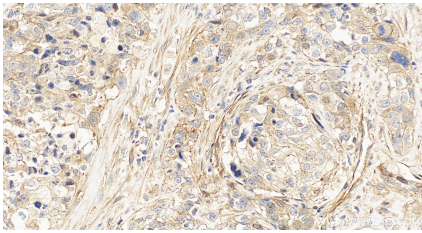
Various lysates were subjected to SDS PAGE followed by western blot with 86610-2-RR (CUEDC2 antibody) at dilution of 1:2000 incubated at room temperature for 1.5 hours. This data was developed using the same antibody clone with 86610-2-PBS in a different storage buffer formulation.



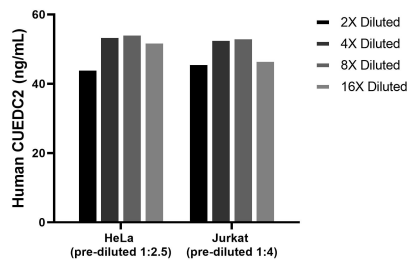
Various lysates were subjected to SDS PAGE followed by western blot with 86610-2-RR (CUEDC2 antibody) at dilution of 1:2000 incubated at room temperature for 1.5 hours. This data was developed using the same antibody clone with 86610-2-PBS in a different storage buffer formulation.



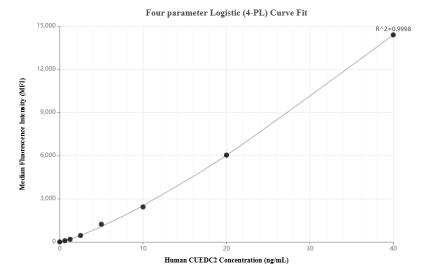
Immunohistochemical analysis of paraffin-embedded human ovary cancer tissue slide using 86610-2-RR (CUEDC2 antibody) at dilution of 1:200 (under 20x lens). Heat mediated antigen retrieval with Tris-EDTA buffer (pH 9.0). This data was developed using the same antibody clone with 86610-2-PBS in a different storage buffer formulation.



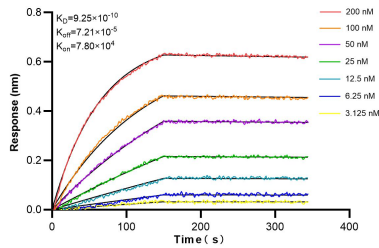
Immunohistochemical analysis of paraffin-embedded human ovary cancer tissue slide using 86610-2-RR (CUEDC2 antibody) at dilution of 1:200 (under 20x lens). Heat mediated antigen retrieval with Tris-EDTA buffer (pH 9.0). This data was developed using the same antibody clone with 86610-2-PBS in a different storage buffer formulation.



The mean CUEDC2 concentration was determined to be 51.3 ng/mL in HeLa cell extract based on a 1.1 mg/mL extract load, 49.9 ng/mL in Jurkat cell extract based on a 1.2 mg/mL extract load.



Cytometric bead array standard curve of MP02553-1, CUEDC2 Recombinant Matched Antibody Pair, PBS Only. Capture antibody: 86610-1-PBS. Detection antibody: 86610-2-PBS. Standard: Ag13847. Range: 0.625-40 ng/mL



Biolayer interferometry (BLI) kinetic assays of 86610-2-RR against Human CUEDC2 were performed. The affinity constant is 0.925 nM.