

For Research Use Only

C9orf78 Recombinant monoclonal antibody

Catalog Number:86612-1-RR



Basic Information

Catalog Number: 86612-1-RR	GenBank Accession Number: BC007664	Purification Method: Protein A purification
Size: 100ul , Concentration: 1000 µg/ml by Nanodrop;	GeneID (NCBI): 51759	CloneNo.: 251553H6
Source: Rabbit	UNIPROT ID: Q9NZ63	Recommended Dilutions: WB: 1:1000-1:6000 IF/ICC: 1:500-1:2000
Isotype: IgG	Full Name: chromosome 9 open reading frame 78	
Immunogen Catalog Number: AG5919	Calculated MW: 34 kDa	
	Observed MW: 35 kDa	

Applications

Tested Applications: WB, IF/ICC, ELISA	Positive Controls:
Species Specificity: human, mouse, rat	WB : HeLa cells, HepG2 cells, RAW 264.7 cells, Neuro-2a cells, NIH/3T3 cells, C2C12 cells, PC-12 cells
	IF/ICC : HepG2 cells,

Background Information

The function of C9orf78 remains largely unknown. The MW of this protein is 34 kDa, and this antibody specially recognises the 34 kDa protein. This antibody works well in WB, IHC and IF applications.

Storage

Storage:
Store at -20°C. Stable for one year after shipment.
Storage Buffer:
PBS with 0.02% sodium azide and 50% glycerol, pH7.3
Aliquoting is unnecessary for -20°C storage

***** 20ul sizes contain 0.1% BSA**

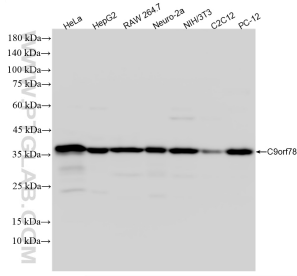
For technical support and original validation data for this product please contact:

T: 1 (888) 4PTGLAB (1-888-478-4522) (toll free in USA), or 1(312) 455-8498 (outside USA)

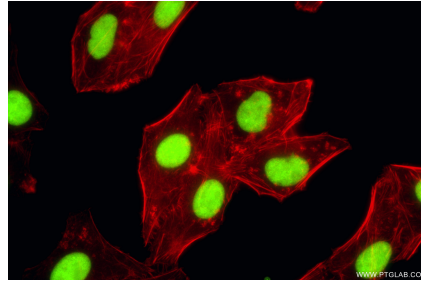
E: proteintech@ptglab.com
W: ptglab.com

This product is exclusively available under Proteintech Group brand and is not available to purchase from any other manufacturer.

Selected Validation Data



Various lysates were subjected to SDS PAGE followed by western blot with 86612-1-RR (C9orf78 antibody) at dilution of 1:3000 incubated at room temperature for 1.5 hours.



Immunofluorescent analysis of (4% PFA) fixed HepG2 cells using C9orf78 antibody (86612-1-RR, Clone: 251553H6) at dilution of 1:1000 and CoraLite® 488-Conjugated Goat Anti-Rabbit IgG(H+L) (SA00013-2), CL594-Phalloidin (red).