

For Research Use Only

Mouse MASP1 Recombinant monoclonal antibody, PBS Only (Detector)

Catalog Number: 86615-2-PBS



Basic Information

Catalog Number: 86615-2-PBS	GenBank Accession Number: NM_008555.2	Purification Method: Protein A purification
Size: 100ug , Concentration: 1 mg/ml by Nanodrop;	GeneID (NCBI): 17174	CloneNo.: 251559F3
Source: Rabbit	UNIPROT ID: P98064-1	
Isotype: IgG	Full Name: mannan-binding lectin serine peptidase 1	
Immunogen Catalog Number: EG4420	Calculated MW: 80 kDa	

Applications

Tested Applications:
Cytometric bead array, Sandwich ELISA, Indirect ELISA

Species Specificity:
mouse

Product Information

86615-2-PBS targets MASP1 as part of a matched antibody pair.

MP02560-1: 86615-1-PBS capture and 86615-2-PBS detection (validated in Cytometric bead array, Sandwich ELISA)

Unconjugated rabbit recombinant monoclonal antibody in PBS only (BSA and azide free) storage buffer at a concentration of 1 mg/mL, ready for conjugation. Created using Proteintech's proprietary in-house recombinant technology. Recombinant production enables unrivalled batch-to-batch consistency, easy scale-up, and future security of supply.

This conjugation ready format makes antibodies ideal for use in many applications including: ELISAs, multiplex assays requiring matched pairs, mass cytometry, and multiplex imaging applications. Antibody use should be optimized by the end user for each application and assay.

Storage

Storage:
Store at -80°C.

Storage Buffer:
PBS only, pH7.3

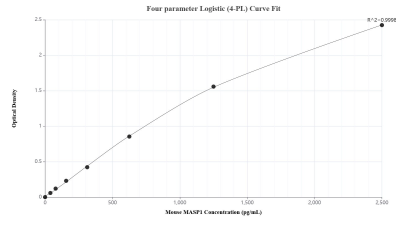
For technical support and original validation data for this product please contact:
T: 1 (888) 4PTGLAB (1-888-478-4522) (toll free in USA), or 1(312) 455-8498 (outside USA) E: proteintech@ptglab.com
W: ptglab.com

This product is exclusively available under Proteintech Group brand and is not available to purchase from any other manufacturer.

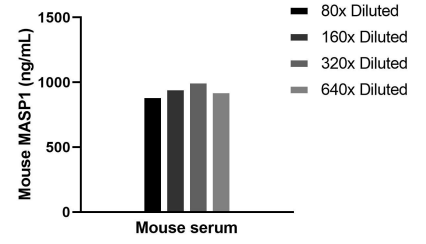
Selected Validation Data



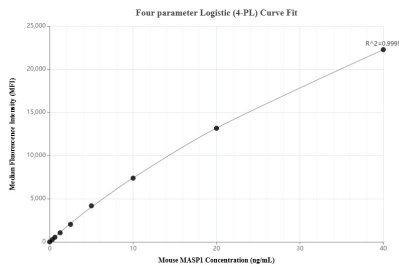
The mean MASP1 concentration was determined to be 35.5 ng/mL in mouse small intestine tissue extract based on a 4.9 mg/mL extract load.



Sandwich ELISA standard curve of MP02560-1, Mouse MASP1 Recombinant Matched Antibody Pair - PBS only. 86615-1-PBS was coated to a plate as the capture antibody and incubated with serial dilutions of standard Eg4420. 86615-2-PBS was HRP conjugated as the detection antibody. Range: 39.1-2500 pg/mL.



The mean MASP1 concentration was determined to be 946.3 ng/mL in mouse serum.



Cytometric bead array standard curve of MP02560-1, MOUSE MASP1 Recombinant Matched Antibody Pair, PBS Only. Capture antibody: 86615-1-PBS. Detection antibody: 86615-2-PBS. Standard: Eg4420. Range: 0.312-40 ng/mL.