

For Research Use Only

Mouse MASP1 Recombinant monoclonal antibody, PBS Only

Catalog Number: 86615-3-PBS



Basic Information

Catalog Number: 86615-3-PBS	GenBank Accession Number: NM_008555.2	Purification Method: Protein A purification
Size: 100ug , Concentration: 1 mg/ml by Nanodrop;	GeneID (NCBI): 17174	CloneNo.: 251559F5
Source: Rabbit	UNIPROT ID: P98064-1	
Isotype: IgG	Full Name: mannan-binding lectin serine peptidase 1	
Immunogen Catalog Number: EG4420	Calculated MW: 80 kDa	
	Observed MW: 90 kDa	

Applications

Tested Applications:
WB, Indirect ELISA

Species Specificity:
mouse

Background Information

MASP1, also known as CRARF, is a serine protease that functions as a component of the lectin pathway of complement activation. The complement pathway plays an essential role in the innate and adaptive immune response. The lectin pathway is triggered upon binding of mannan-binding lectin (MBL) and ficolins to sugar moieties, which leads to activation of the associated proteases MASP1 and MASP2. The observed molecular weight of 90 kDa is consistent with the values described in the literature (PMID: 24472859, 12396007).

Storage

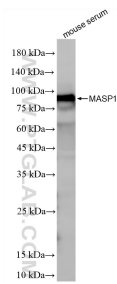
Storage:
Store at -80°C.

Storage Buffer:
PBS only, pH7.3

For technical support and original validation data for this product please contact:
T: 1 (888) 4PTGLAB (1-888-478-4522) (toll free in USA), or 1(312) 455-8498 (outside USA)
E: proteintech@ptglab.com
W: ptglab.com

This product is exclusively available under Proteintech Group brand and is not available to purchase from any other manufacturer.

Selected Validation Data



mouse serum were subjected to SDS PAGE followed by western blot with 86615-3-RR (MASP1 antibody) at dilution of 1:2000 incubated at room temperature for 1.5 hours. This data was developed using the same antibody clone with 86615-3-PBS in a different storage buffer formulation.