

For Research Use Only

MASP1 Recombinant monoclonal antibody

Catalog Number: 86615-3-RR



Basic Information

Catalog Number: 86615-3-RR	GenBank Accession Number: NM_008555.2	Purification Method: Protein A purification
Size: 100ul , Concentration: 1000 µg/ml by Nanodrop;	GeneID (NCBI): 17174	CloneNo.: 251559F5
Source: Rabbit	UNIPROT ID: P98064-1	Recommended Dilutions: WB: 1:1000-1:4000
Isotype: IgG	Full Name: mannan-binding lectin serine peptidase 1	
Immunogen Catalog Number: EG4420	Calculated MW: 80 kDa	
	Observed MW: 90 kDa	

Applications

Tested Applications: WB, ELISA	Positive Controls: WB : mouse serum,
Species Specificity: mouse	

Background Information

MASP1, also known as CRARF, is a serine protease that functions as a component of the lectin pathway of complement activation. The complement pathway plays an essential role in the innate and adaptive immune response. The lectin pathway is triggered upon binding of mannan-binding lectin (MBL) and ficolins to sugar moieties, which leads to activation of the associated proteases MASP1 and MASP2. The observed molecular weight of 90 kDa is consistent with the values described in the literature (PMID: 24472859, 12396007).

Storage

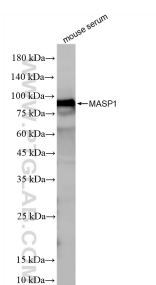
Storage:
Store at -20°C. Stable for one year after shipment.
Storage Buffer:
PBS with 0.02% sodium azide and 50% glycerol, pH7.3
Aliquoting is unnecessary for -20°C storage

*** 20ul sizes contain 0.1% BSA

For technical support and original validation data for this product please contact:
T: 1 (888) 4PTGLAB (1-888-478-4522) (toll free in USA), or 1(312) 455-8498 (outside USA)
E: proteintech@ptglab.com
W: ptglab.com

This product is exclusively available under Proteintech Group brand and is not available to purchase from any other manufacturer.

Selected Validation Data



mouse serum were subjected to SDS PAGE followed by western blot with 86615-3-RR (MASP1 antibody) at dilution of 1:2000 incubated at room temperature for 1.5 hours.