

For Research Use Only

PD-ECGF Recombinant monoclonal antibody

Catalog Number:86618-3-RR



Basic Information

Catalog Number: 86618-3-RR	GenBank Accession Number: BC018160	Purification Method: Protein A purification
Size: 100ul , Concentration: 1000 µg/ml by Nanodrop;	GeneID (NCBI): 1890	CloneNo.: 251581B2
Source: Rabbit	UNIPROT ID: P19971	Recommended Dilutions: WB: 1:5000-1:50000
Isotype: IgG	Full Name: thymidine phosphorylase	
Immunogen Catalog Number: AG3052	Calculated MW: 482 aa, 50 kDa	
	Observed MW: 50 kDa	

Applications

Tested Applications: WB, ELISA	Positive Controls: WB : A431 cells, THP-1 cells, OVCAR-3 cells
Species Specificity: human	

Background Information

Platelet derived endothelial cell growth factor (PD-ECGF), also known as thymidine phosphorylase (TP), induces migration and angiogenesis in endothelial and tumor cells, and was upregulated in various malignancies compared to that in normal tissues. Interestingly, PD-ECGF has dual effect on tumor development and chemotherapy. It could stimulate cancer cell migration and proliferation. On the other hand, some chemotherapeutic agents (5-fluorouracil, capecitabine, etc.) were converted to their active forms through TP enzymes.

Storage

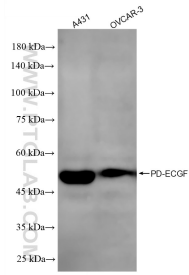
Storage:
Store at -20°C. Stable for one year after shipment.
Storage Buffer:
PBS with 0.02% sodium azide and 50% glycerol, pH7.3
Aliquoting is unnecessary for -20°C storage

*** 20ul sizes contain 0.1% BSA

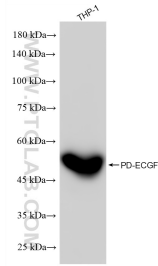
For technical support and original validation data for this product please contact:
T: 1 (888) 4PTGLAB (1-888-478-4522) (toll free in USA), or 1(312) 455-8498 (outside USA)
E: proteintech@ptglab.com
W: ptglab.com

This product is exclusively available under Proteintech Group brand and is not available to purchase from any other manufacturer.

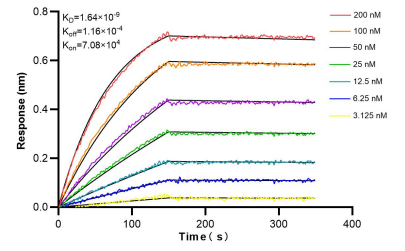
Selected Validation Data



Various lysates were subjected to SDS PAGE followed by western blot with 86618-3-RR (PD-ECGF antibody) at dilution of 1:10000 incubated at room temperature for 1.5 hours.



Various lysates were subjected to SDS PAGE followed by western blot with 86618-3-RR (PD-ECGF antibody) at dilution of 1:10000 incubated at room temperature for 1.5 hours.



Biolayer interferometry (BLI) kinetic assays of 86618-3-RR against Human PD-ECGF were performed. The affinity constant is 1.64 nM.