

For Research Use Only

CD13 Recombinant monoclonal antibody, PBS Only (Detector)

Catalog Number: 86620-6-PBS



Basic Information

Catalog Number: 86620-6-PBS	GenBank Accession Number: BC058928	Purification Method: Protein A purification
Size: 100ug , Concentration: 1 mg/ml by Nanodrop;	GeneID (NCBI): 290	CloneNo.: 251501A1
Source: Rabbit	ENSEMBL Gene ID: ENSG00000166825	
Isotype: IgG	UNIPROT ID: P15144	
Immunogen Catalog Number: EG3748	Full Name: alanyl (membrane) aminopeptidase	
	Calculated MW: 110 kDa	

Applications

Tested Applications:
Sandwich ELISA, Indirect ELISA

Species Specificity:
human

Product Information

86620-6-PBS targets CD13 as part of a matched antibody pair:

MP02566-2: 86620-4-PBS capture and 86620-6-PBS detection (validated in Sandwich ELISA)

Unconjugated rabbit recombinant monoclonal antibody in PBS only (BSA and azide free) storage buffer at a concentration of 1 mg/mL, ready for conjugation. Created using Proteintech's proprietary in-house recombinant technology. Recombinant production enables unrivalled batch-to-batch consistency, easy scale-up, and future security of supply.

This conjugation ready format makes antibodies ideal for use in many applications including: ELISAs, multiplex assays requiring matched pairs, mass cytometry, and multiplex imaging applications. Antibody use should be optimized by the end user for each application and assay.

Storage

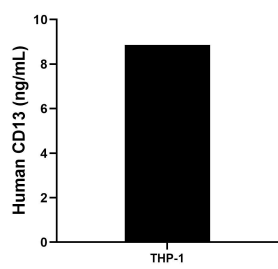
Storage:
Store at -80°C.

Storage Buffer:
PBS only, pH7.3

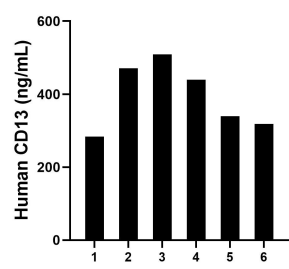
For technical support and original validation data for this product please contact:
T: 1 (888) 4PTGLAB (1-888-478-4522) (toll free in USA), or 1(312) 455-8498 (outside USA)
E: proteintech@ptglab.com
W: ptglab.com

This product is exclusively available under Proteintech Group brand and is not available to purchase from any other manufacturer.

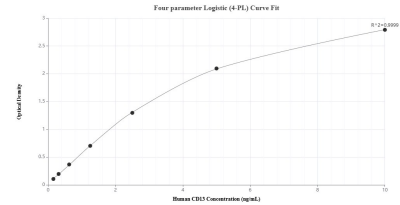
Selected Validation Data



The mean CD13 concentration was determined to be 8.86 ng/mL in THP-1 cell extract based on a 1.2 mg/mL extract load.



Plasma of six individual healthy human donors was measured. The human CD13 concentration of detected samples was determined to be 393.55 ng/mL with a range of 283.65 - 508.88 ng/mL.



Sandwich ELISA standard curve of MP02566-2, Human CD13 Recombinant Matched Antibody Pair - PBS only. 86620-4-PBS was coated to a plate as the capture antibody and incubated with serial dilutions of standard Eg3748. 86620-6-PBS was HRP conjugated as the detection antibody. Range: 0.156-10 ng/mL