

For Research Use Only

ELAVL2 Recombinant monoclonal antibody

Catalog Number: 86623-3-RR



Basic Information

Catalog Number: 86623-3-RR	GenBank Accession Number: BC030692	Purification Method: Protein A purification
Size: 100ul , Concentration: 1000 µg/ml by Nanodrop;	GeneID (NCBI): 1993	CloneNo.: 251573E1
Source: Rabbit	UNIPROT ID: Q12926	Recommended Dilutions: WB: 1:5000-1:50000
Isotype: IgG	Full Name: ELAV (embryonic lethal, abnormal vision, Drosophila)-like 2 (Hu antigen B)	
Immunogen Catalog Number: AG5105	Calculated MW: 39 kDa	
	Observed MW: 39 kDa	

Applications

Tested Applications: WB, ELISA	Positive Controls: WB : SH-SY5Y cells, Neuro-2a cells, PC-12 cells, mouse brain tissue, rat brain tissue, mouse cerebellum tissue, mouse spinal cord tissue
Species Specificity: human, mouse, rat	

Background Information

The ELAV (embryonic lethal abnormal visual system) gene of *D. Melanogaste* is the the first identified member of a family of neuronal RNA binding proteins that is conserved in metazoans. The proteins in this family contain three RNA Recognition Motifs (RRM), with a hinge region separating the second and third RRM and an optional non-conserved N-terminal region. The hinge includes signals essential for nuclear export and subcellular localization [PMID:9874760]. Elav is expressed specifically in the neurons and is required for the correct development and maintenance of the nervous system. ELAVL2 can binds RNA, and recognize a GAAA motif. In addition, it can bind to its own 3'-UTR, the FOS 3'-UTR and the ID 3'-UTR.

Storage

Storage:
Store at -20°C. Stable for one year after shipment.
Storage Buffer:
PBS with 0.02% sodium azide and 50% glycerol, pH7.3
Aliquoting is unnecessary for -20°C storage

*** 20ul sizes contain 0.1% BSA

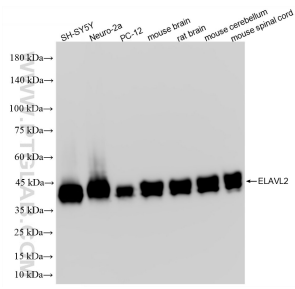
For technical support and original validation data for this product please contact:

T: 1 (888) 4PTGLAB (1-888-478-4522) (toll free in USA), or 1(312) 455-8498 (outside USA)

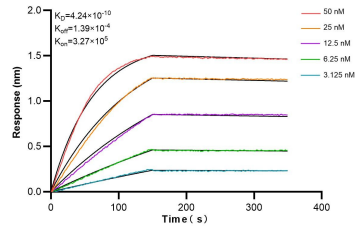
E: proteintech@ptglab.com
W: ptglab.com

This product is exclusively available under Proteintech Group brand and is not available to purchase from any other manufacturer.

Selected Validation Data



Various lysates were subjected to SDS PAGE followed by western blot with 86623-3-RR (ELAVL2 antibody) at dilution of 1:10000 incubated at room temperature for 1.5 hours.



Biolayer interferometry (BLI) kinetic assays of 86623-3-RR against Human ELAVL2 were performed. The affinity constant is 0.424 nM.