

For Research Use Only

LGR5 Recombinant monoclonal antibody

Catalog Number:86627-1-RR



Basic Information

Catalog Number: 86627-1-RR	GenBank Accession Number: BC096324	Purification Method: Protein A purification
Size: 100ul , Concentration: 1000 µg/ml by Nanodrop;	GeneID (NCBI): 8549	CloneNo.: 251491A5
Source: Rabbit	UNIPROT ID: O75473	Recommended Dilutions: WB: 1:1000-1:4000
Isotype: IgG	Full Name: leucine-rich repeat-containing G protein-coupled receptor 5	
Immunogen Catalog Number: AG31625	Calculated MW: 907 aa, 100 kDa	
	Observed MW: 100 kDa	

Applications

Tested Applications: WB, ELISA	Positive Controls: WB : HEK-293 cells, BGC-823 cells, SGC-7901 cells, mouse skeletal muscle tissue, rat skeletal muscle tissue
Species Specificity: human, mouse, rat	

Background Information

Leucine-rich repeat-containing G-protein coupled receptor 5 (LGR5) also known as G-protein coupled receptor 49 (GPR49) or G-protein coupled receptor 67 (GPR67) is a protein that in humans is encoded by the LGR5 gene. It is a member of GPCR class A receptor proteins. R-spondin proteins are the biological ligands of LGR5. LGR5 is expressed across a diverse range of tissue such as in the muscle, placenta, spinal cord and brain and particularly as a biomarker of adult stem cells in certain tissues. LGR5 is crucial during embryogenesis as LGR null studies in mice incurred 100% neonatal mortality accompanied by several craniofacial distortions such as ankyloglossia and gastrointestinal dilation (PMID: 9642114, 16575208, 525477).

Storage

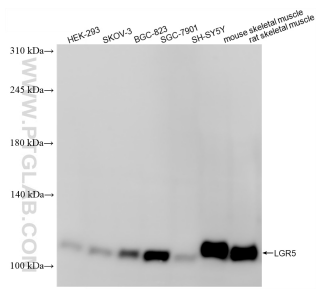
Storage:
Store at -20°C. Stable for one year after shipment.
Storage Buffer:
PBS with 0.02% sodium azide and 50% glycerol, pH7.3
Aliquoting is unnecessary for -20°C storage

*** 20ul sizes contain 0.1% BSA

For technical support and original validation data for this product please contact:
T: 1 (888) 4PTGLAB (1-888-478-4522) (toll free in USA), or 1(312) 455-8498 (outside USA)
E: proteintech@ptglab.com
W: ptglab.com

This product is exclusively available under Proteintech Group brand and is not available to purchase from any other manufacturer.

Selected Validation Data



Various lysates were subjected to SDS PAGE followed by western blot with 86627-1-RR (LGR5 antibody) at dilution of 1:2000 incubated at room temperature for 1.5 hours.