

For Research Use Only

SIGLEC14 Recombinant monoclonal antibody

Catalog Number:86628-3-RR



Basic Information

Catalog Number: 86628-3-RR	GenBank Accession Number: NM_001098612.1	Purification Method: Protein A purification
Size: 100ul , Concentration: 1000 µg/ml by Nanodrop;	GeneID (NCBI): 100049587	CloneNo.: 250756E4
Source: Rabbit	UNIPROT ID: Q08ET2	Recommended Dilutions: WB: 1:1000-1:4000 IF/ICC: 1:50-1:500
Isotype: IgG	Full Name: sialic acid binding Ig-like lectin 14	
Immunogen Catalog Number: EG4178	Calculated MW: 44 kDa	
	Observed MW: 44 kDa	

Applications

Tested Applications: WB, IF/ICC, ELISA	Positive Controls: WB : HL-60 cells, THP-1 cells, U-937 cells
Species Specificity: human	IF/ICC : U-937 cells,

Background Information

Siglecs are involved in regulating cell proliferation, differentiation, apoptosis, and implementing cell-cell interactions (PMID: 19076345). They play important roles in regulating immune responses, in hostpathogen interactions, and in tumorigenesis (PMID: 22524423; 25234143). Sialic acid-binding Ig-like lectin 14 (SIGLEC14) is expressed by granulocytes and monocytes, which has an activating role in regulating macrophage immune responses (PMID: 24799499; 37024598).

Storage

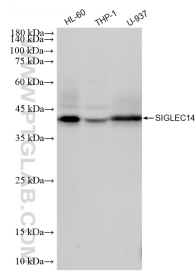
Storage:
Store at -20°C. Stable for one year after shipment.
Storage Buffer:
PBS with 0.02% sodium azide and 50% glycerol, pH7.3
Aliquoting is unnecessary for -20°C storage

*** 20ul sizes contain 0.1% BSA

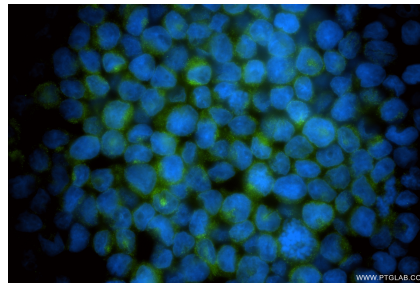
For technical support and original validation data for this product please contact:
T: 1 (888) 4PTGLAB (1-888-478-4522) (toll free in USA), or 1(312) 455-8498 (outside USA)
E: proteintech@ptglab.com
W: ptglab.com

This product is exclusively available under Proteintech Group brand and is not available to purchase from any other manufacturer.

Selected Validation Data



Various lysates were subjected to SDS PAGE followed by western blot with 86628-3-RR (Siglec-14 antibody) at dilution of 1:2000 incubated at room temperature for 1.5 hours.



Immunofluorescent analysis of (4% PFA) fixed U-937 cells using SIGLEC14 antibody (86628-3-RR, Clone: 250756E4) at dilution of 1:200 and CoraLite® 488-Conjugated Goat Anti-Rabbit IgG(H+L) (SA00013-2).