

For Research Use Only

CLEC5A Recombinant monoclonal antibody, PBS Only

Catalog Number:86633-2-PBS



Basic Information

Catalog Number:

86633-2-PBS

Size:

100ug, Concentration: 1 mg/ml by Nanodrop;

Source:

Rabbit

Isotype:

IgG

GenBank Accession Number:

BC112099

GeneID (NCBI):

23601

UNIPROT ID:

Q9NY25

Full Name:

C-type lectin domain family 5, member A

Calculated MW:

188 aa, 22 kDa

Observed MW:

22 kDa

Purification Method:

Protein A purification

CloneNo.:

251734A11

Applications

Tested Applications:

WB, Indirect ELISA

Species Specificity:

human

Background Information

C-type lectin domain family 5 member A (CLEC5A, also known as CLECSF5 and MDL1) is a spleen tyrosine kinase (Syk)-coupled receptor abundantly expressed by monocytes, macrophages and neutrophils (PMID: 10449773). It has a pivotal function in activating multiple aspects of innate immunity against bacterial invasion (PMID: 28824166). Both in vitro and in vivo evidence supported that CLEC5A was involved in glioblastoma pathogenesis via regulation of PI3K/Akt pathway (PMID: 30834619).

Storage

Storage:

Store at -80°C.

Storage Buffer:

PBS only, pH7.3

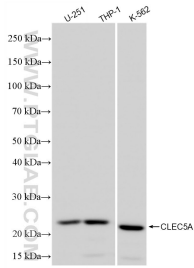
For technical support and original validation data for this product please contact:

T: 1 (888) 4PTGLAB (1-888-478-4522) (toll free in USA), or 1(312) 455-8498 (outside USA)

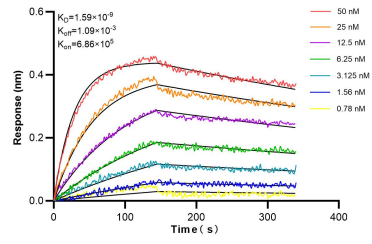
E: proteintech@ptglab.com
W: ptglab.com

This product is exclusively available under Proteintech Group brand and is not available to purchase from any other manufacturer.

Selected Validation Data



Various lysates were subjected to SDS PAGE followed by western blot with 86633-2-RR (CLEC5A antibody) at dilution of 1:3000 incubated at room temperature for 1.5 hours. This data was developed using the same antibody clone with 86633-2-PBS in a different storage buffer formulation.



Biolayer interferometry (BLI) kinetic assays of 86633-2-RR against Human CLEC5A were performed. The affinity constant is 1.59 nM.