

For Research Use Only

CLEC5A Recombinant monoclonal antibody

Catalog Number: 86633-2-RR



Basic Information

Catalog Number: 86633-2-RR	GenBank Accession Number: BC112099	Purification Method: Protein A purification
Size: 100ul , Concentration: 1000 µg/ml by Nanodrop;	GeneID (NCBI): 23601	CloneNo.: 251734A11
Source: Rabbit	UNIPROT ID: Q9NY25	Recommended Dilutions: WB: 1:1000-1:6000
Isotype: IgG	Full Name: C-type lectin domain family 5, member A	
	Calculated MW: 188 aa, 22 kDa	
	Observed MW: 22 kDa	

Applications

Tested Applications: WB, ELISA	Positive Controls: WB : U-251 cells, U-87 MG cells, THP-1 cells, K-562 cells
Species Specificity: human	

Background Information

C-type lectin domain family 5 member A (CLEC5A, also known as CLECSF5 and MDL1) is a spleen tyrosine kinase (Syk)-coupled receptor abundantly expressed by monocytes, macrophages and neutrophils (PMID: 10449773). It has a pivotal function in activating multiple aspects of innate immunity against bacterial invasion (PMID: 28824166). Both in vitro and in vivo evidence supported that CLEC5A was involved in glioblastoma pathogenesis via regulation of PI3K/Akt pathway (PMID: 30834619).

Storage

Storage:
Store at -20°C. Stable for one year after shipment.
Storage Buffer:
PBS with 0.02% sodium azide and 50% glycerol, pH7.3
Aliquoting is unnecessary for -20°C storage

*** 20ul sizes contain 0.1% BSA

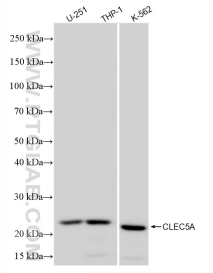
For technical support and original validation data for this product please contact:

T: 1 (888) 4PTGLAB (1-888-478-4522) (toll free in USA), or 1(312) 455-8498 (outside USA)

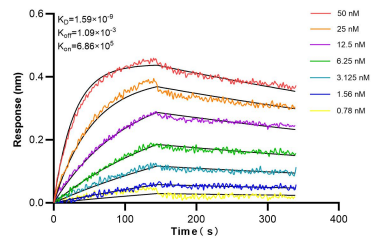
E: proteintech@ptglab.com
W: ptglab.com

This product is exclusively available under Proteintech Group brand and is not available to purchase from any other manufacturer.

Selected Validation Data



Various lysates were subjected to SDS PAGE followed by western blot with 86633-2-RR (CLEC5A antibody) at dilution of 1:3000 incubated at room temperature for 1.5 hours.



Biolayer interferometry (BLI) kinetic assays of 86633-2-RR against Human CLEC5A were performed. The affinity constant is 1.59 nM.