

For Research Use Only

SLC25A24 Recombinant monoclonal antibody, PBS Only (Detector)

Catalog Number:86635-1-PBS



Basic Information

Catalog Number: 86635-1-PBS	GenBank Accession Number: BC068561	Purification Method: Protein A purification
Size: 100ug , Concentration: 1 mg/ml by Nanodrop;	GeneID (NCBI): 29957	CloneNo.: 251563C10
Source: Rabbit	UNIPROT ID: Q6NUK1	
Isotype: IgG	Full Name: solute carrier family 25 (mitochondrial carrier; phosphate carrier), member 24	
Immunogen Catalog Number: AG6334	Calculated MW: 53 kDa	
	Observed MW: 48 kDa	

Applications

Tested Applications:
WB, Sandwich ELISA, Indirect ELISA

Species Specificity:
human, mouse, rat

Product Information

86635-1-PBS targets SLC25A24 as part of a matched antibody pair:

MP02724-1: 86635-2-PBS capture and 86635-1-PBS detection (validated in Sandwich ELISA)

Unconjugated rabbit recombinant monoclonal antibody in PBS only (BSA and azide free) storage buffer at a concentration of 1 mg/mL, ready for conjugation. Created using Proteintech's proprietary in-house recombinant technology. Recombinant production enables unrivalled batch-to-batch consistency, easy scale-up, and future security of supply.

This conjugation ready format makes antibodies ideal for use in many applications including: ELISAs, multiplex assays requiring matched pairs, mass cytometry, and multiplex imaging applications. Antibody use should be optimized by the end user for each application and assay.

Background Information

SLC25A24 (solute carrier family 25 member 24) is a gene encoding a mitochondrial ATP-Mg/phosphate transporter. It belongs to the mitochondrial carrier protein family and is mainly involved in mitochondrial energy metabolism and calcium signal regulation.

Storage

Storage:
Store at -80°C.

Storage Buffer:
PBS only, pH7.3

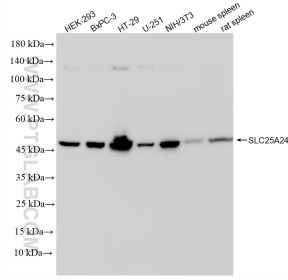
For technical support and original validation data for this product please contact:

T: 1 (888) 4PTGLAB (1-888-478-4522) (toll free in USA), or 1(312) 455-8498 (outside USA)

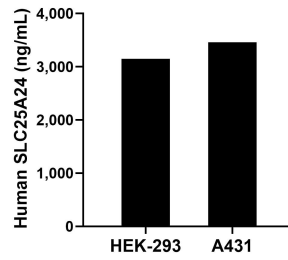
E: proteintech@ptglab.com
W: ptglab.com

This product is exclusively available under Proteintech Group brand and is not available to purchase from any other manufacturer.

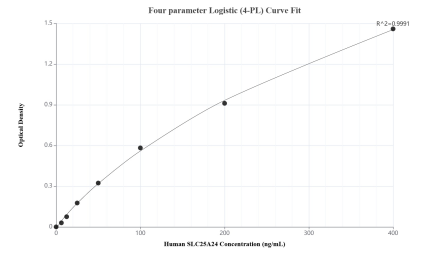
Selected Validation Data



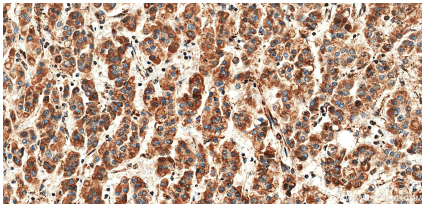
Various lysates were subjected to SDS PAGE followed by western blot with 86635-1-RR (SLC25A24 antibody) at dilution of 1:10000 incubated at room temperature for 1.5 hours. This data was developed using the same antibody clone with 86635-1-PBS in a different storage buffer formulation.



The mean SLC25A24 concentration was determined to be 3,148.64 ng/mL in HEK-293 cell extract based on a 1.20 mg/mL extract load and 3,459.34 ng/mL in A431 cell extract based on a 1.20 mg/mL extract load.



Sandwich ELISA standard curve of MP02724-1, Human SLC25A24 Recombinant Matched Antibody Pair - PBS only. 86635-2-PBS was coated to a plate as the capture antibody and incubated with serial dilutions of standard Ag6334. 86635-1-PBS was HRP conjugated as the detection antibody. Range: 6.25-400 ng/mL.



Immunohistochemical analysis of paraffin-embedded Human Hepatocellular cancer slide using 86635-1-RR (SLC25A24 antibody) at dilution of 1:1000 (under 40x lens). Heat mediated antigen retrieval with Tris-EDTA buffer (pH 9.0). This data was developed using the same antibody clone with 86635-1-PBS in a different storage buffer formulation.