

For Research Use Only

SLC25A24 Recombinant monoclonal antibody

Catalog Number:86635-1-RR



Basic Information

Catalog Number: 86635-1-RR	GenBank Accession Number: BC068561	Purification Method: Protein A purification
Size: 100ul , Concentration: 1000 µg/ml by Nanodrop;	GeneID (NCBI): 29957	CloneNo.: 251563C10
Source: Rabbit	UNIPROT ID: Q6NUK1	Recommended Dilutions: WB: 1:5000-1:50000 IHC: 1:500-1:2000
Isotype: IgG	Full Name: solute carrier family 25 (mitochondrial carrier; phosphate carrier), member 24	
Immunogen Catalog Number: AG6334	Calculated MW: 53 kDa	
	Observed MW: 48 kDa	

Applications

Tested Applications:

WB, IHC, ELISA

Species Specificity:

human, mouse, rat

Note-IHC: suggested antigen retrieval with TE buffer pH 9.0; (*) Alternatively, antigen retrieval may be performed with citrate buffer pH 6.0

Positive Controls:

WB : HEK-293 cells, BxPC-3 cells, HT-29 cells, U-251 cells, NIH/3T3 cells, mouse spleen tissue, rat spleen tissue

IHC : Human Hepatocellular cancer,

Background Information

SLC25A24 (solute carrier family 25 member 24) is a gene encoding a mitochondrial ATP-Mg/phosphate transporter. It belongs to the mitochondrial carrier protein family and is mainly involved in mitochondrial energy metabolism and calcium signal regulation.

Storage

Storage:

Store at -20°C. Stable for one year after shipment.

Storage Buffer:

PBS with 0.02% sodium azide and 50% glycerol, pH7.3

Aliquoting is unnecessary for -20°C storage

*** 20ul sizes contain 0.1% BSA

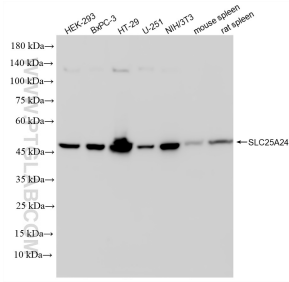
For technical support and original validation data for this product please contact:

T: 1 (888) 4PTGLAB (1-888-478-4522) (toll free in USA), or 1(312) 455-8498 (outside USA)

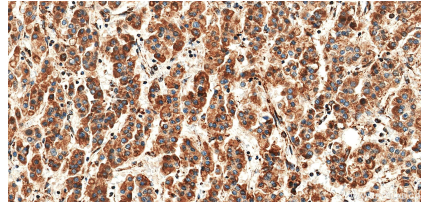
E: proteintech@ptglab.com
W: ptglab.com

This product is exclusively available under Proteintech Group brand and is not available to purchase from any other manufacturer.

Selected Validation Data



Various lysates were subjected to SDS PAGE followed by western blot with 86635-1-RR (SLC25A24 antibody) at dilution of 1:10000 incubated at room temperature for 1.5 hours.



Immunohistochemical analysis of paraffin-embedded Human Hepatocellular cancer slide using 86635-1-RR (SLC25A24 antibody) at dilution of 1:1000 (under 40x lens). Heat mediated antigen retrieval with Tris-EDTA buffer (pH 9.0).