

For Research Use Only

# SLC25A24 Recombinant monoclonal antibody, PBS Only (Capture)

Catalog Number:86635-2-PBS



## Basic Information

<b>Catalog Number:</b> 86635-2-PBS	<b>GenBank Accession Number:</b> BC068561	<b>Purification Method:</b> Protein A purification
<b>Size:</b> 100ug, Concentration: 1 mg/ml by Nanodrop;	<b>GeneID (NCBI):</b> 29957	<b>CloneNo.:</b> 251563E4
<b>Source:</b> Rabbit	<b>UNIPROT ID:</b> Q6NUK1	
<b>Isotype:</b> IgG	<b>Full Name:</b> solute carrier family 25 (mitochondrial carrier; phosphate carrier), member 24	
<b>Immunogen Catalog Number:</b> AG6334	<b>Calculated MW:</b> 53 kDa	

## Applications

**Tested Applications:**  
Sandwich ELISA, Indirect ELISA

**Species Specificity:**  
human

## Product Information

86635-2-PBS targets SLC25A24 as part of a matched antibody pair:

MP02724-1: 86635-2-PBS capture and 86635-1-PBS detection (validated in Sandwich ELISA)

Unconjugated rabbit recombinant monoclonal antibody in PBS only (BSA and azide free) storage buffer at a concentration of 1 mg/mL, ready for conjugation. Created using Proteintech's proprietary in-house recombinant technology. Recombinant production enables unrivalled batch-to-batch consistency, easy scale-up, and future security of supply.

This conjugation ready format makes antibodies ideal for use in many applications including: ELISAs, multiplex assays requiring matched pairs, mass cytometry, and multiplex imaging applications. Antibody use should be optimized by the end user for each application and assay.

## Storage

**Storage:**  
Store at -80°C.  
**Storage Buffer:**  
PBS only, pH7.3

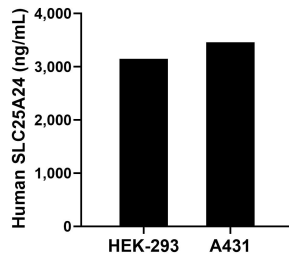
For technical support and original validation data for this product please contact:

T: 1 (888) 4PTGLAB (1-888-478-4522) (toll free in USA), or 1(312) 455-8498 (outside USA)

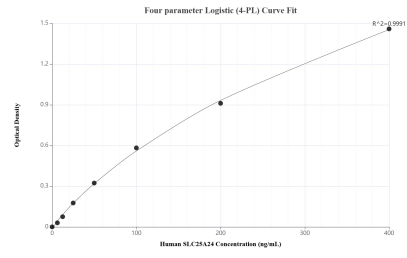
E: [proteintech@ptglab.com](mailto:proteintech@ptglab.com)  
W: [ptglab.com](http://ptglab.com)

**This product is exclusively available under Proteintech Group brand and is not available to purchase from any other manufacturer.**

## Selected Validation Data



The mean SLC25A24 concentration was determined to be 3,148.64 ng/mL in HEK-293 cell extract based on a 1.20 mg/mL extract load and 3,459.34 ng/mL in A431 cell extract based on a 1.20 mg/mL extract load.



Sandwich ELISA standard curve of MP02724-1, Human SLC25A24 Recombinant Matched Antibody Pair - PBS only. 86635-2-PBS was coated to a plate as the capture antibody and incubated with serial dilutions of standard Ag6334. 86635-1-PBS was HRP conjugated as the detection antibody. Range: 6.25-400 ng/mL