

For Research Use Only

CD5L Recombinant monoclonal antibody, PBS Only

Catalog Number:86638-1-PBS



Basic Information

Catalog Number: 86638-1-PBS	GenBank Accession Number: NM_005894.2	Purification Method: Protein A purification
Size: 100ug, Concentration: 1 mg/ml by Nanodrop;	GeneID (NCBI): 922	CloneNo.: 250651G1
Source: Rabbit	UNIPROT ID: O43866	
Isotype: IgG	Full Name: CD5 molecule-like	
Immunogen Catalog Number: EG3129	Calculated MW: 38 kDa	
	Observed MW: 50 kDa	

Applications

Tested Applications:
WB, IF/ICC, Indirect ELISA

Species Specificity:
human

Background Information

CD5 molecule-like (CD5L), also known as apoptosis inhibitor expressed by macrophages (AIM), SP-alpha, apoptosis inhibitor 6 (API6), is a member of the scavenger receptor cysteine-rich (SRCR) family of proteins (PMID: 9045627; 9892623). CD5L is a soluble protein mainly secreted mostly by macrophages in lymphoid and inflamed tissues (PMID: 15009805). It contains three SRCR domains, each approximately 100 amino acids in length with sialic acid content at a potential region of O-linked glycosylation between SRCR domains 1 and 2. CD5L is involved in different processes such as metabolism, infection and autophagy (PMID: 33920819).

Storage

Storage:
Store at -80°C.

Storage Buffer:
PBS only, pH7.3

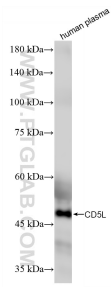
For technical support and original validation data for this product please contact:

T: 1 (888) 4PTGLAB (1-888-478-4522) (toll free in USA), or 1(312) 455-8498 (outside USA)

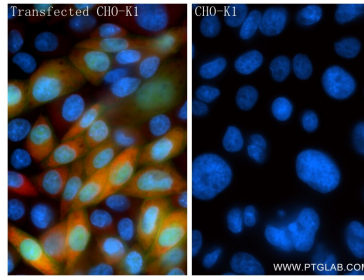
E: proteintech@ptglab.com
W: ptglab.com

This product is exclusively available under Proteintech Group brand and is not available to purchase from any other manufacturer.

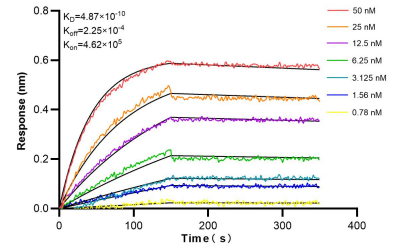
Selected Validation Data



human plasma were subjected to SDS PAGE followed by western blot with 86638-1-RR (CD5L antibody) at dilution of 1:1000 incubated at room temperature for 1.5 hours. This data was developed using the same antibody clone with 86638-1-PBS in a different storage buffer formulation.



Immunofluorescent analysis of (4% PFA) fixed transfected CHO-K1 using CD5L antibody (86638-1-RR, Clone: 250651G1) at dilution of 1:500 and CoraLite® 594-Conjugated Goat Anti-Rabbit IgG(H+L) (SA00013-4). This data was developed using the same antibody clone with 86638-1-PBS in a different storage buffer formulation.



Biolayer interferometry (BLI) kinetic assays of 86638-1-RR against Human CD5L were performed. The affinity constant is 0.487 nM.