

For Research Use Only

# CD5L Recombinant monoclonal antibody

Catalog Number: 86638-1-RR



## Basic Information

<b>Catalog Number:</b> 86638-1-RR	<b>GenBank Accession Number:</b> NM_005894.2	<b>Purification Method:</b> Protein A purification
<b>Size:</b> 100ul , Concentration: 1000 µg/ml by Nanodrop;	<b>GeneID (NCBI):</b> 922	<b>CloneNo.:</b> 250651G1
<b>Source:</b> Rabbit	<b>UNIPROT ID:</b> O43866	<b>Recommended Dilutions:</b> WB: 1:500-1:2000 IF/ICC: 1:250-1:1000
<b>Isotype:</b> IgG	<b>Full Name:</b> CD5 molecule-like	
<b>Immunogen Catalog Number:</b> EG3129	<b>Calculated MW:</b> 38 kDa	
	<b>Observed MW:</b> 50 kDa	

## Applications

<b>Tested Applications:</b> WB, IF/ICC, ELISA	<b>Positive Controls:</b> WB : human plasma, IF/ICC : Transfected CHO-K1,
<b>Species Specificity:</b> human	

## Background Information

CD5 molecule-like (CD5L), also known as apoptosis inhibitor expressed by macrophages (AIM), SP-alpha, apoptosis inhibitor 6 (API6), is a member of the scavenger receptor cysteine-rich (SRCR) family of proteins (PMID: 9045627; 9892623). CD5L is a soluble protein mainly secreted mostly by macrophages in lymphoid and inflamed tissues (PMID: 15009805). It contains three SRCR domains, each approximately 100 amino acids in length with sialic acid content at a potential region of O-linked glycosylation between SRCR domains 1 and 2. CD5L is involved in different processes such as metabolism, infection and autophagy (PMID: 33920819).

## Storage

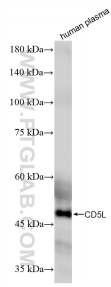
**Storage:**  
Store at -20°C. Stable for one year after shipment.  
**Storage Buffer:**  
PBS with 0.02% sodium azide and 50% glycerol, pH7.3  
Aliquoting is unnecessary for -20°C storage

\*\*\* 20ul sizes contain 0.1% BSA

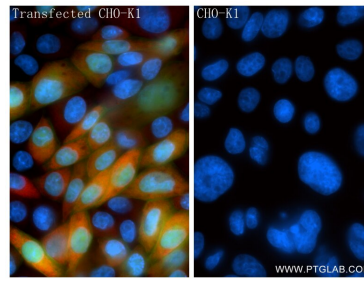
For technical support and original validation data for this product please contact:  
T: 1 (888) 4PTGLAB (1-888-478-4522) (toll free in USA), or 1(312) 455-8498 (outside USA)  
E: proteintech@ptglab.com  
W: ptglab.com

This product is exclusively available under Proteintech Group brand and is not available to purchase from any other manufacturer.

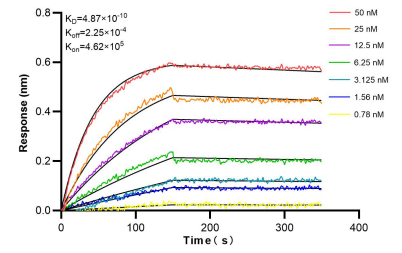
## Selected Validation Data



human plasma were subjected to SDS PAGE followed by western blot with 86638-1-RR (CD5L antibody) at dilution of 1:1000 incubated at room temperature for 1.5 hours.



Immunofluorescent analysis of (4% PFA) fixed transfected CHO-K1 using CD5L antibody (86638-1-RR, Clone: 250651G1) at dilution of 1:500 and CoraLite®594-Conjugated Goat Anti-Rabbit IgG(H+L) (SA00013-4).



Bi-layer interferometry (BLI) kinetic assays of 86638-1-RR against Human CD5L were performed. The affinity constant is 0.487 nM.