

For Research Use Only

# E2F8 Recombinant monoclonal antibody

Catalog Number: 86645-1-RR



## Basic Information

<b>Catalog Number:</b> 86645-1-RR	<b>GenBank Accession Number:</b> BC028244	<b>Purification Method:</b> Protein A purification
<b>Size:</b> 100ul , Concentration: 1000 µg/ml by Nanodrop;	<b>GeneID (NCBI):</b> 79733	<b>CloneNo.:</b> 251510C2
<b>Source:</b> Rabbit	<b>UNIPROT ID:</b> A0AVK6	<b>Recommended Dilutions:</b> WB: 1:1000-1:4000 IP: 0.5-4.0 ug for 1.0-3.0 mg of total protein lysate
<b>Isotype:</b> IgG	<b>Full Name:</b> E2F transcription factor 8	
<b>Immunogen Catalog Number:</b> AG4216	<b>Calculated MW:</b> 867 aa, 94 kDa	
	<b>Observed MW:</b> 105 kDa	

## Applications

<b>Tested Applications:</b> WB, IP, ELISA	<b>Positive Controls:</b> WB : HeLa cells, HEK-293T cells, Jurkat cells
<b>Species Specificity:</b> human	<b>IP :</b> HeLa cells,

## Background Information

E2F8 is one E2F transcription factor that is essential for orchestrating expression of genes required for cell cycle progression, proliferation, apoptosis and differentiation. E2F8 shows a high degree of resemblance to E2F7 and shares the unique structure of E2F7 by having two distinct domains exhibiting a high degree of similarity to the DNA-binding domain of the E2F family. Together with E2F7, they possess two DNA-binding domains that are predicted to interact with each other. E2F8 binds consensus E2F sites in a DP-independent manner and represses transcription of E2F-regulated promoters. Ectopic expression of E2F8 inhibits cellular proliferation. The calculated molecular weight of E2F8 is 94 kDa, but modified E2F8 is about 105 kDa. (PMID: 15897886)

## Storage

**Storage:**  
Store at -20°C. Stable for one year after shipment.  
**Storage Buffer:**  
PBS with 0.02% sodium azide and 50% glycerol, pH7.3  
Aliquoting is unnecessary for -20°C storage

\*\*\* 20ul sizes contain 0.1% BSA

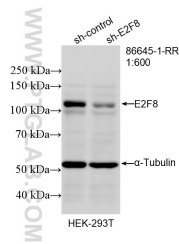
For technical support and original validation data for this product please contact:

T: 1 (888) 4PTGLAB (1-888-478-4522) (toll free in USA), or 1(312) 455-8498 (outside USA)

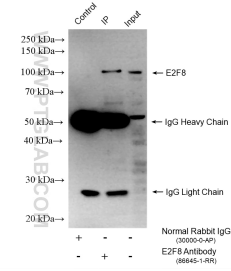
E: [proteintech@ptglab.com](mailto:proteintech@ptglab.com)  
W: [ptglab.com](http://ptglab.com)

This product is exclusively available under Proteintech Group brand and is not available to purchase from any other manufacturer.

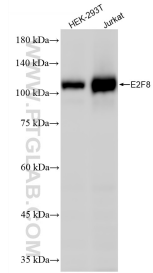
## Selected Validation Data



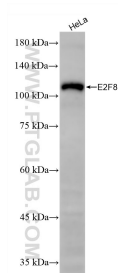
WB result of E2F8 antibody (86645-1-RR; 1:600; incubated at room temperature for 1.5 hours) with sh-Control and sh-E2F8 transfected HEK-293T cells.



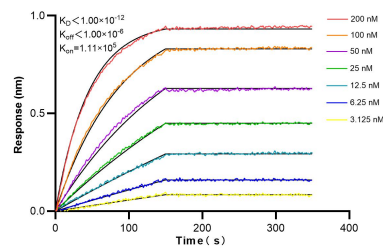
IP result of anti-E2F8 (IP:86645-1-RR, 4ug; Detection:86645-1-RR 1:600) with HeLa cells lysate 1120 ug.



Various lysates were subjected to SDS PAGE followed by western blot with 86645-1-RR (E2F8 antibody) at dilution of 1:2000 incubated at room temperature for 1.5 hours.



HeLa cells were subjected to SDS PAGE followed by western blot with 86645-1-RR (E2F8 antibody) at dilution of 1:2000 incubated at room temperature for 1.5 hours.



Biolayer interferometry (BLI) kinetic assays of 86645-1-RR against Human E2F8 were performed. The affinity constant is below 1 pM.