

For Research Use Only

GPX3 Recombinant monoclonal antibody

Catalog Number:86650-2-RR



Basic Information

Catalog Number: 86650-2-RR	GenBank Accession Number: BC050378	Purification Method: Protein A purification
Size: 100ul , Concentration: 1000 µg/ml by Nanodrop;	GeneID (NCBI): 2878	CloneNo.: 251602E9
Source: Rabbit	UNIPROT ID: P22352	Recommended Dilutions: WB: 1:5000-1:50000 IHC: 1:500-1:2000 IF-P: 1:250-1:1000
Isotype: IgG	Full Name: glutathione peroxidase 3 (plasma)	
Immunogen Catalog Number: AG5054	Calculated MW: 226 aa, 26 kDa	
	Observed MW: 20-27 kDa	

Applications

Tested Applications:

WB, IHC, IF-P, ELISA

Species Specificity:

human, mouse, rat

Note-IHC: suggested antigen retrieval with TE buffer pH 9.0; (*) Alternatively, antigen retrieval may be performed with citrate buffer pH 6.0

Positive Controls:

WB : mouse kidney tissue, rat kidney tissue

IHC : mouse kidney tissue,

IF-P : mouse kidney tissue,

Background Information

GPX3 (glutathione peroxidase 3) is also named as Plasma Glutathione Peroxidase. GPX3 can protect cells and enzymes from oxidative damage, by catalyzing the reduction of hydrogen peroxide, lipid peroxides and organic hydroperoxide, by glutathione. GPX3 is secreted into plasma and like GPX1, is a 100 kDa homotetramer consisting of four identical 23 kDa subunits, each containing a selenocysteine residue at the active site. It can be detected as a band of 20 kDa which is considered as the chain A of GPX3 (selenocysteine to glycine mutant).

Storage

Storage:

Store at -20°C. Stable for one year after shipment.

Storage Buffer:

PBS with 0.02% sodium azide and 50% glycerol, pH7.3

Aliquoting is unnecessary for -20°C storage

*** 20ul sizes contain 0.1% BSA

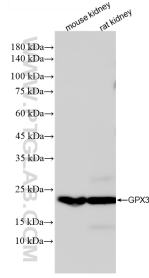
For technical support and original validation data for this product please contact:

T: 1 (888) 4PTGLAB (1-888-478-4522) (toll free in USA), or 1(312) 455-8498 (outside USA)

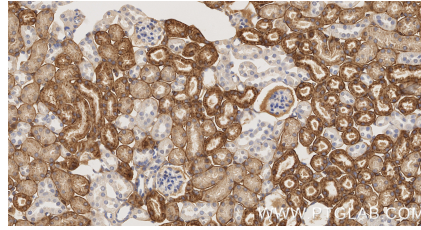
E: proteintech@ptglab.com
W: ptglab.com

This product is exclusively available under Proteintech Group brand and is not available to purchase from any other manufacturer.

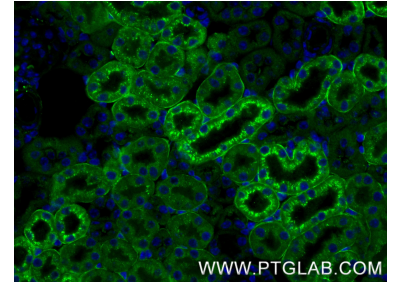
Selected Validation Data



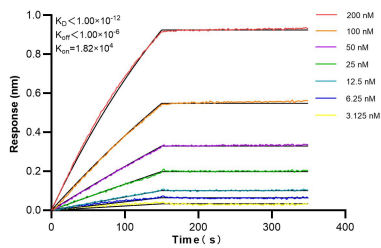
Various lysates were subjected to SDS PAGE followed by western blot with 86650-2-RR (GPX3 antibody) at dilution of 1:10000 incubated at room temperature for 1.5 hours.



Immunohistochemical analysis of paraffin-embedded mouse kidney tissue slide using 86650-2-RR (GPX3 antibody) at dilution of 1:1000 (under 40x lens). Heat mediated antigen retrieval with Tris-EDTA buffer (pH 9.0).



Immunofluorescent analysis of (4% PFA) fixed paraffin-embedded mouse kidney tissue using GPX3 antibody (86650-2-RR, Clone: 251602E9) at dilution of 1:500 and Multi-rAb CoraLite® Plus 488-Goat Anti-Rabbit Recombinant Secondary Antibody (H+L) (RGAR002). Heat mediated antigen retrieval with Tris-EDTA buffer (pH 9.0).



Biolayer interferometry (BLI) kinetic assays of 86650-2-RR against Human GPX3 were performed. The affinity constant is below 1 pM.