

For Research Use Only

NP Recombinant monoclonal antibody, PBS Only (Capture)

Catalog Number:86651-2-PBS



Basic Information

Catalog Number: 86651-2-PBS	GenBank Accession Number: BC106074	Purification Method: Protein A purification
Size: 100ug , Concentration: 1 mg/ml by Nanodrop;	GeneID (NCBI): 4860	CloneNo.: 251603E8
Source: Rabbit	UNIPROT ID: P00491	
Isotype: IgG	Full Name: nucleoside phosphorylase	
Immunogen Catalog Number: AG12507	Calculated MW: 289 aa, 32 kDa	

Applications

Tested Applications:
Sandwich ELISA, Indirect ELISA

Species Specificity:
human

Product Information

86651-2-PBS targets NP as part of a matched antibody pair:

MP02719-1: 86651-2-PBS capture and 86651-1-PBS detection (validated in Sandwich ELISA)

Unconjugated rabbit recombinant monoclonal antibody in PBS only (BSA and azide free) storage buffer at a concentration of 1 mg/mL, ready for conjugation. Created using Proteintech's proprietary in-house recombinant technology. Recombinant production enables unrivalled batch-to-batch consistency, easy scale-up, and future security of supply.

This conjugation ready format makes antibodies ideal for use in many applications including: ELISAs, multiplex assays requiring matched pairs, mass cytometry, and multiplex imaging applications. Antibody use should be optimized by the end user for each application and assay.

Storage

Storage:
Store at -80°C.
Storage Buffer:
PBS only, pH7.3

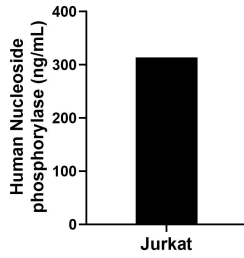
For technical support and original validation data for this product please contact:

T: 1 (888) 4PTGLAB (1-888-478-4522) (toll free
in USA), or 1(312) 455-8498 (outside USA)

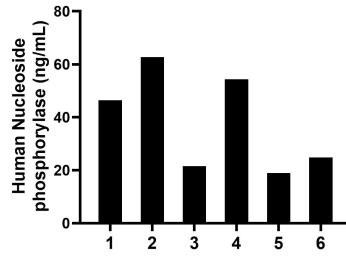
E: proteintech@ptglab.com
W: ptglab.com

This product is exclusively available under Proteintech Group brand and is not available to purchase from any other manufacturer.

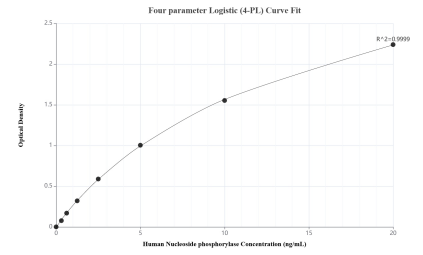
Selected Validation Data



The mean Nucleoside phosphorylase concentration was determined to be 313.73 ng/mL in Jurkat cell extract based on a 1.20 mg/mL extract load.



Plasma of six individual healthy human donors was measured. The Nucleoside phosphorylase concentration of detected samples was determined to be 38.13 ng/mL with a range of 18.89-62.76 ng/mL.



Sandwich ELISA standard curve of MP02719-1, Human Nucleoside phosphorylase Recombinant Matched Antibody Pair - PBS only. 86651-2-PBS was coated to a plate as the capture antibody and incubated with serial dilutions of standard Ag12507. 86651-1-PBS was HRP conjugated as the detection antibody. Range: 0.313-20 ng/mL.