

For Research Use Only

LPAR1,EDG2 Recombinant monoclonal antibody, PBS Only

Catalog Number:86655-2-PBS



Basic Information

Catalog Number:

86655-2-PBS

Size:

100ug , Concentration: 1 mg/ml by Nanodrop;

Source:

Rabbit

Isotype:

IgG

GenBank Accession Number:

BC030615

GeneID (NCBI):

1902

UNIPROT ID:

Q92633

Full Name:

lysophosphatidic acid receptor 1

Calculated MW:

364 aa, 41 kDa

Observed MW:

50 kDa

Purification Method:

Protein A purification

CloneNo.:

251542A6

Applications

Tested Applications:

WB, Indirect ELISA

Species Specificity:

human, mouse

Background Information

EDG2 (also known as LPA1) is a G-protein coupled receptor for lysophosphatidic acid (LPA), a potent motility inducing factor, which is a major component of serum (PMID: 19415462). EDG2 is widely expressed in normal tissue during growth and development. In the context of cancer, several studies have suggested that EDG2 expression in tumors is often similar to that shown in normal tissue (PMID: 17496233).

Storage

Storage:

Store at -80°C.

Storage Buffer:

PBS only, pH7.3

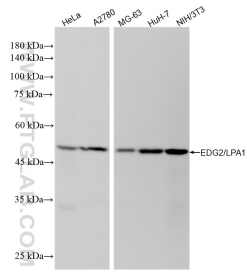
For technical support and original validation data for this product please contact:

T: 1 (888) 4PTGLAB (1-888-478-4522) (toll free in USA), or 1(312) 455-8498 (outside USA)

E: proteintech@ptglab.com
W: ptglab.com

This product is exclusively available under Proteintech Group brand and is not available to purchase from any other manufacturer.

Selected Validation Data



Various lysates were subjected to SDS PAGE followed by western blot with 86655-2-RR (LPAR1,EDG2 antibody) at dilution of 1:3000 incubated at room temperature for 1.5 hours. This data was developed using the same antibody clone with 86655-2-PBS in a different storage buffer formulation.