

For Research Use Only

# CLTC Recombinant monoclonal antibody, PBS Only (Detector)

Catalog Number: 86660-1-PBS



## Basic Information

<b>Catalog Number:</b> 86660-1-PBS	<b>GenBank Accession Number:</b> BC054489	<b>Purification Method:</b> Protein A purification
<b>Size:</b> 100ug , Concentration: 1 mg/ml by Nanodrop;	<b>GeneID (NCBI):</b> 1213	<b>CloneNo.:</b> 25163489
<b>Source:</b> Rabbit	<b>UNIPROT ID:</b> Q00610	
<b>Isotype:</b> IgG	<b>Full Name:</b> clathrin, heavy chain (Hc)	
<b>Immunogen Catalog Number:</b> AG25041	<b>Calculated MW:</b> 192 kDa	

## Applications

**Tested Applications:**  
Cytometric bead array, Sandwich ELISA, Indirect ELISA

**Species Specificity:**  
human

## Product Information

86660-1-PBS targets CLTC as part of a matched antibody pair:

MP02577-1: 86660-2-PBS capture and 86660-1-PBS detection (validated in Cytometric bead array, Sandwich ELISA)

Unconjugated rabbit recombinant monoclonal antibody in PBS only (BSA and azide free) storage buffer at a concentration of 1 mg/mL, ready for conjugation. Created using Proteintech's proprietary in-house recombinant technology. Recombinant production enables unrivalled batch-to-batch consistency, easy scale-up, and future security of supply.

This conjugation ready format makes antibodies ideal for use in many applications including: ELISAs, multiplex assays requiring matched pairs, mass cytometry, and multiplex imaging applications. Antibody use should be optimized by the end user for each application and assay.

## Storage

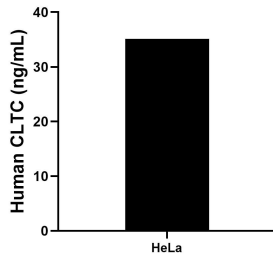
**Storage:**  
Store at -80°C.

**Storage Buffer:**  
PBS only, pH7.3

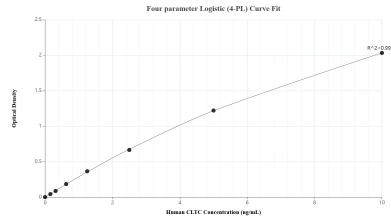
For technical support and original validation data for this product please contact:  
T: 1 (888) 4PTGLAB (1-888-478-4522) (toll free in USA), or 1(312) 455-8498 (outside USA)      E: proteintech@ptglab.com  
W: ptglab.com

**This product is exclusively available under Proteintech Group brand and is not available to purchase from any other manufacturer.**

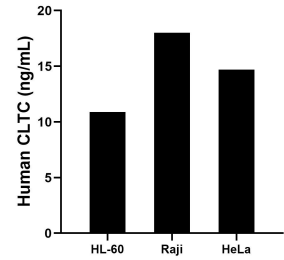
## Selected Validation Data



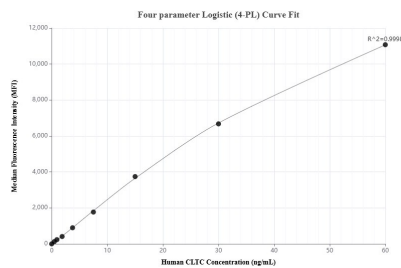
The mean CLTC concentration was determined to be 35.14 ng/mL in HeLa cell extract based on a 1.20 mg/mL extract load.



Sandwich ELISA standard curve of MP02577-1, Human CLTC Recombinant Matched Antibody Pair - PBS only. 86660-2-PBS was coated to a plate as the capture antibody and incubated with serial dilutions of standard Ag25041. 86660-1-PBS was HRP conjugated as the detection antibody. Range: 0.156-10 ng/mL



The mean CLTC concentration was determined to be 10.9 ng/mL in HL-60 cell extract based on a 1.4 mg/mL extract load, 18.0 ng/mL in Raji cell extract based on a 1.3 mg/mL extract load, 14.7 ng/mL in HeLa cell extract based on a 1.1 mg/mL extract load.



Cytometric bead array standard curve of MP02577-1, CLTC Recombinant Matched Antibody Pair, PBS Only. Capture antibody: 86660-2-PBS. Detection antibody: 86660-1-PBS. Standard: Ag25041. Range: 0.469-60 ng/mL