

For Research Use Only

CLTC Recombinant monoclonal antibody, PBS Only (Capture)

Catalog Number:86660-2-PBS



Basic Information

Catalog Number: 86660-2-PBS	GenBank Accession Number: BC054489	Purification Method: Protein A purification
Size: 100ug , Concentration: 1 mg/ml by Nanodrop;	GeneID (NCBI): 1213	CloneNo.: 251634F10
Source: Rabbit	UNIPROT ID: Q00610	
Isotype: IgG	Full Name: clathrin, heavy chain (Hc)	
Immunogen Catalog Number: AG25041	Calculated MW: 192 kDa	

Applications

Tested Applications:
Cytometric bead array, Sandwich ELISA, Indirect ELISA

Species Specificity:
human

Product Information

86660-2-PBS targets CLTC as part of a matched antibody pair:

MP02577-1: 86660-2-PBS capture and 86660-1-PBS detection (validated in Cytometric bead array, Sandwich ELISA)

Unconjugated rabbit recombinant monoclonal antibody in PBS only (BSA and azide free) storage buffer at a concentration of 1 mg/mL, ready for conjugation. Created using Proteintech's proprietary in-house recombinant technology. Recombinant production enables unrivalled batch-to-batch consistency, easy scale-up, and future security of supply.

This conjugation ready format makes antibodies ideal for use in many applications including: ELISAs, multiplex assays requiring matched pairs, mass cytometry, and multiplex imaging applications. Antibody use should be optimized by the end user for each application and assay.

Storage

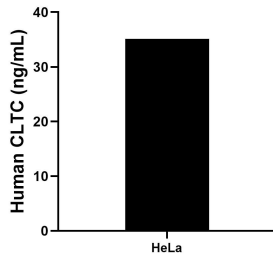
Storage:
Store at -80°C.

Storage Buffer:
PBS only, pH7.3

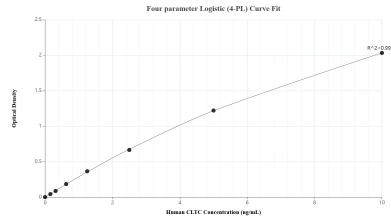
For technical support and original validation data for this product please contact:
T: 1 (888) 4PTGLAB (1-888-478-4522) (toll free in USA), or 1(312) 455-8498 (outside USA) E: proteintech@ptglab.com
W: ptglab.com

This product is exclusively available under Proteintech Group brand and is not available to purchase from any other manufacturer.

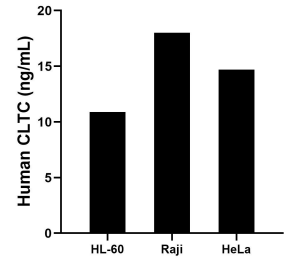
Selected Validation Data



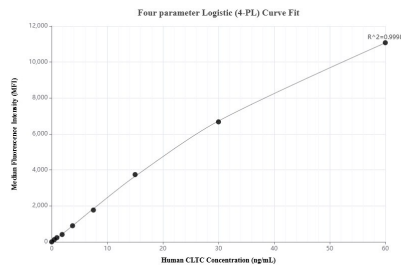
The mean CLTC concentration was determined to be 35.14 ng/mL in HeLa cell extract based on a 1.20 mg/mL extract load.



Sandwich ELISA standard curve of MP02577-1, Human CLTC Recombinant Matched Antibody Pair - PBS only. 86660-2-PBS was coated to a plate as the capture antibody and incubated with serial dilutions of standard Ag25041. 86660-1-PBS was HRP conjugated as the detection antibody. Range: 0.156-10 ng/mL



The mean CLTC concentration was determined to be 10.9 ng/mL in HL-60 cell extract based on a 1.4 mg/mL extract load, 18.0 ng/mL in Raji cell extract based on a 1.3 mg/mL extract load, 14.7 ng/mL in HeLa cell extract based on a 1.1 mg/mL extract load.



Cytometric bead array standard curve of MP02577-1, CLTC Recombinant Matched Antibody Pair, PBS Only. Capture antibody: 86660-2-PBS. Detection antibody: 86660-1-PBS. Standard: Ag25041. Range: 0.469-60 ng/mL