

For Research Use Only

LPL Recombinant monoclonal antibody, PBS Only (Detector)

Catalog Number:86666-1-PBS



Basic Information

Catalog Number: 86666-1-PBS	GenBank Accession Number: BC011353	Purification Method: Protein A purification
Size: 100ug , Concentration: 1 mg/ml by Nanodrop;	GeneID (NCBI): 4023	CloneNo.: 250965E4
Source: Rabbit	UNIPROT ID: P06858	
Isotype: IgG	Full Name: lipoprotein lipase	
Immunogen Catalog Number: AG29782	Calculated MW: 475 aa, 53 kDa	

Applications

Tested Applications:
Sandwich ELISA, Indirect ELISA, Sample test

Species Specificity:
human

Product Information

86666-1-PBS targets LPL as part of a matched antibody pair:

MP02594-1: 86666-2-PBS capture and 86666-1-PBS detection (validated in Sandwich ELISA)

Unconjugated rabbit recombinant monoclonal antibody in PBS only (BSA and azide free) storage buffer at a concentration of 1 mg/mL, ready for conjugation. Created using Proteintech's proprietary in-house recombinant technology. Recombinant production enables unrivalled batch-to-batch consistency, easy scale-up, and future security of supply.

This conjugation ready format makes antibodies ideal for use in many applications including: ELISAs, multiplex assays requiring matched pairs, mass cytometry, and multiplex imaging applications. Antibody use should be optimized by the end user for each application and assay.

Storage

Storage:
Store at -80°C.
Storage Buffer:
PBS only, pH7.3

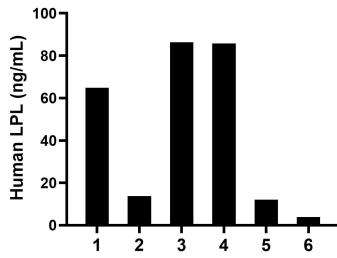
For technical support and original validation data for this product please contact:

T: 1 (888) 4PTGLAB (1-888-478-4522) (toll free
in USA), or 1(312) 455-8498 (outside USA)

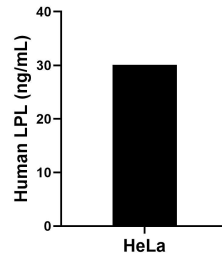
E: proteintech@ptglab.com
W: ptglab.com

This product is exclusively available under Proteintech Group brand and is not available to purchase from any other manufacturer.

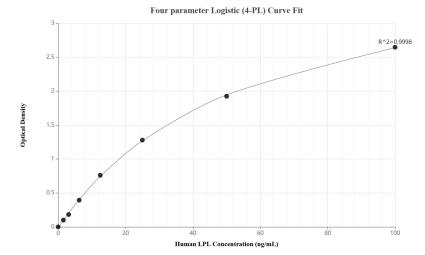
Selected Validation Data



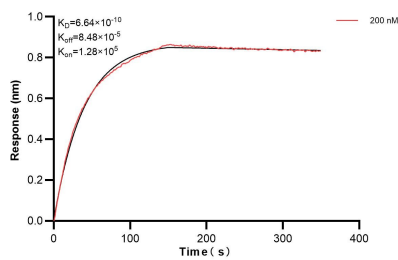
Human milk of six individual healthy human donors was measured. The LPL concentration of detected samples was determined to be 44.44 ng/mL with a range of 3.94-86.27 ng/mL.



The mean LPL concentration was determined to be 30.1 ng/mL in HeLa cell extract based on a 1.2 mg/mL extract load.



Sandwich ELISA standard curve of MP02594-1, Human LPL Recombinant Matched Antibody Pair - PBS only. 86666-2-PBS was coated to a plate as the capture antibody and incubated with serial dilutions of standard Ag29782. 86666-1-PBS was HRP conjugated as the detection antibody. Range: 1.56-100 ng/mL.



Biolayer interferometry (BLI) kinetic assays of 86666-1-PBS against Human LPL were performed. The affinity constant is 0.664 nM.