

For Research Use Only

LPL Recombinant antibody, PBS Only (Capture)

Catalog Number:86666-2-PBS



Basic Information

Catalog Number: 86666-2-PBS	GenBank Accession Number: BC011353	Purification Method: Protein A purification
Size: 100ug , Concentration: 1 mg/ml by Nanodrop;	GeneID (NCBI): 4023	CloneNo.: 250965D11
Source: Rabbit	UNIPROT ID: P06858	
Isotype: IgG	Full Name: lipoprotein lipase	
Immunogen Catalog Number: AG29782	Calculated MW: 475 aa, 53 kDa	

Applications

Tested Applications:
Sandwich ELISA, Indirect ELISA, Sample test

Species Specificity:
human

Product Information

86666-2-PBS targets LPL as part of a matched antibody pair:

MP02594-1: 86666-2-PBS capture and 86666-1-PBS detection (validated in Sandwich ELISA)

Unconjugated rabbit recombinant monoclonal antibody in PBS only (BSA and azide free) storage buffer at a concentration of 1 mg/mL, ready for conjugation. Created using Proteintech's proprietary in-house recombinant technology. Recombinant production enables unrivalled batch-to-batch consistency, easy scale-up, and future security of supply.

This conjugation ready format makes antibodies ideal for use in many applications including: ELISAs, multiplex assays requiring matched pairs, mass cytometry, and multiplex imaging applications. Antibody use should be optimized by the end user for each application and assay.

Storage

Storage:
Store at -80°C.
Storage Buffer:
PBS only, pH7.3

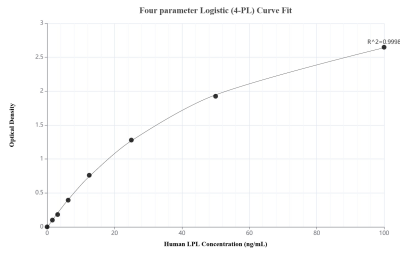
For technical support and original validation data for this product please contact:

T: 1 (888) 4PTGLAB (1-888-478-4522) (toll free in USA), or 1(312) 455-8498 (outside USA)

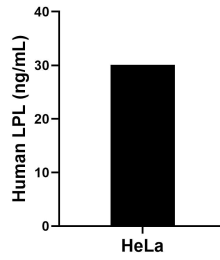
E: proteintech@ptglab.com
W: ptglab.com

This product is exclusively available under Proteintech Group brand and is not available to purchase from any other manufacturer.

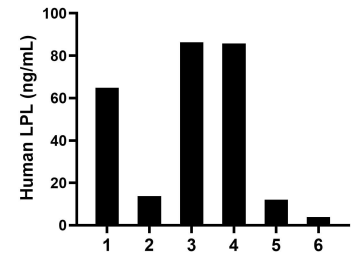
Selected Validation Data



Sandwich ELISA standard curve of MP02594-1, Human LPL Recombinant Matched Antibody Pair - PBS only. 86666-2-PBS was coated to a plate as the capture antibody and incubated with serial dilutions of standard Ag29782. 86666-1-PBS was HRP conjugated as the detection antibody. Range: 1.56-100 ng/mL



The mean LPL concentration was determined to be 30.1 ng/mL in HeLa cell extract based on a 1.2 mg/mL extract load.



Human milk of six individual healthy human donors was measured. The LPL concentration of detected samples was determined to be 44.44 ng/mL with a range of 3.94-86.27 ng/mL.