

For Research Use Only

# IL-32 Recombinant monoclonal antibody, PBS Only (Detector)

Catalog Number: 86678-1-PBS



## Basic Information

<b>Catalog Number:</b> 86678-1-PBS	<b>GenBank Accession Number:</b> NM_001012633.1	<b>Purification Method:</b> Protein A purification
<b>Size:</b> 100ug, Concentration: 1 mg/ml by Nanodrop;	<b>GeneID (NCBI):</b> 9235	<b>CloneNo.:</b> 250373F3
<b>Source:</b> Rabbit	<b>UNIPROT ID:</b> P24001-4	
<b>Isotype:</b> IgG	<b>Full Name:</b> interleukin 32	
<b>Immunogen Catalog Number:</b> EG3224	<b>Calculated MW:</b> 15 kDa	

## Applications

**Tested Applications:**  
Sandwich ELISA, Indirect ELISA

**Species Specificity:**  
human

## Product Information

86678-1-PBS targets IL-32 as part of a matched antibody pair:

MP02615-1: 86678-2-PBS capture and 86678-1-PBS detection (validated in Sandwich ELISA)

Unconjugated rabbit recombinant monoclonal antibody in PBS only (BSA and azide free) storage buffer at a concentration of 1 mg/mL, ready for conjugation. Created using Proteintech's proprietary in-house recombinant technology. Recombinant production enables unrivalled batch-to-batch consistency, easy scale-up, and future security of supply.

This conjugation ready format makes antibodies ideal for use in many applications including: ELISAs, multiplex assays requiring matched pairs, mass cytometry, and multiplex imaging applications. Antibody use should be optimized by the end user for each application and assay.

## Background Information

Interleukin 32 (IL32) is a member of the cytokine family. IL32 contains a tyrosine sulfation site, 3 potential N-myristoylation sites, multiple putative phosphorylation sites, and an RGD cell-attachment sequence. IL32 is a predominantly intracellular proinflammatory cytokine produced by epithelial cells, monocytes, T-lymphocytes and natural killer cells, and is involved in inflammation and cancer development. IL32 is able to induce the release a variety of pro-inflammatory cytokines such as IL8, tumor necrosis factor- $\alpha$  (TNF $\alpha$ ) and IL6. Expression of this protein is increased after the activation of T-cells by mitogens or the activation of NK cells by IL-2.

## Storage

**Storage:**  
Store at -80°C.

**Storage Buffer:**  
PBS only, pH7.3

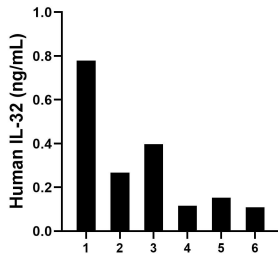
For technical support and original validation data for this product please contact:

T: 1 (888) 4PTGLAB (1-888-478-4522) (toll free in USA), or 1(312) 455-8498 (outside USA)

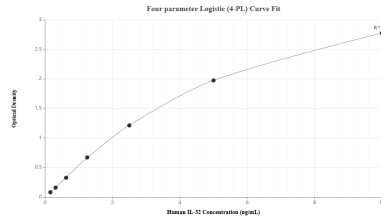
E: [proteintech@ptglab.com](mailto:proteintech@ptglab.com)  
W: [ptglab.com](http://ptglab.com)

**This product is exclusively available under Proteintech Group brand and is not available to purchase from any other manufacturer.**

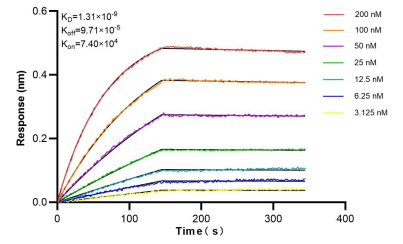
## Selected Validation Data



Plasma of six individual healthy human donors was measured. The human IL-32 concentration of detected samples was determined to be 0.30 ng/mL with a range of 0.11 - 0.78 ng/mL.



Sandwich ELISA standard curve of MP02615-1, Human IL-32 Recombinant Matched Antibody Pair - PBS only. 86678-2-PBS was coated to a plate as the capture antibody and incubated with serial dilutions of standard Eg3224. 86678-1-PBS was HRP conjugated as the detection antibody. Range: 0.156-10 ng/mL



Bi-layer interferometry (BLI) kinetic assays of 86678-1-PBS against Human IL-32 were performed. The affinity constant is 1.31 nM.