

For Research Use Only

IL32 Recombinant monoclonal antibody, PBS Only (Capture)

Catalog Number:86678-2-PBS



Basic Information

Catalog Number: 86678-2-PBS	GenBank Accession Number: NM_001012633.1	Purification Method: Protein A purification
Size: 100ug , Concentration: 1 mg/ml by Nanodrop;	GeneID (NCBI): 9235	CloneNo.: 250373D3
Source: Rabbit	UNIPROT ID: P24001-4	
Isotype: IgG	Full Name: interleukin 32	
Immunogen Catalog Number: EG3224	Calculated MW: 15 kDa	

Applications

Tested Applications:
Sandwich ELISA, Indirect ELISA, Sample test

Species Specificity:
human

Product Information

86678-2-PBS targets IL32 as part of a matched antibody pair:

MP02615-1: 86678-2-PBS capture and 86678-1-PBS detection (validated in Sandwich ELISA)

Unconjugated rabbit recombinant monoclonal antibody in PBS only (BSA and azide free) storage buffer at a concentration of 1 mg/mL, ready for conjugation. Created using Proteintech's proprietary in-house recombinant technology. Recombinant production enables unrivalled batch-to-batch consistency, easy scale-up, and future security of supply.

This conjugation ready format makes antibodies ideal for use in many applications including: ELISAs, multiplex assays requiring matched pairs, mass cytometry, and multiplex imaging applications. Antibody use should be optimized by the end user for each application and assay.

Storage

Storage:
Store at -80°C.
Storage Buffer:
PBS only, pH7.3

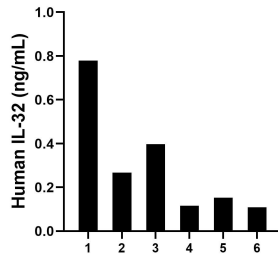
For technical support and original validation data for this product please contact:

T: 1 (888) 4PTGLAB (1-888-478-4522) (toll free in USA), or 1(312) 455-8498 (outside USA)

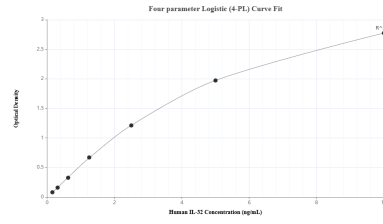
E: proteintech@ptglab.com
W: ptglab.com

This product is exclusively available under Proteintech Group brand and is not available to purchase from any other manufacturer.

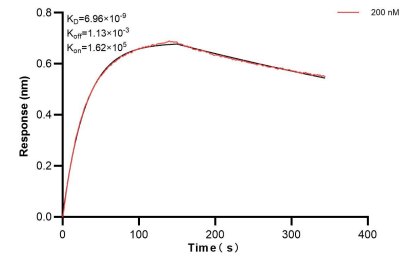
Selected Validation Data



Plasma of six individual healthy human donors was measured. The human IL-32 concentration of detected samples was determined to be 0.30 ng/mL with a range of 0.11 - 0.78 ng/mL.



Sandwich ELISA standard curve of MP02615-1, Human IL-32 Recombinant Matched Antibody Pair - PBS only. 86678-2-PBS was coated to a plate as the capture antibody and incubated with serial dilutions of standard Eg3224. 86678-1-PBS was HRP conjugated as the detection antibody. Range: 0.156-10 ng/mL



Bi-layer interferometry (BLI) kinetic assays of 86678-2-PBS against Human IL32 were performed. The affinity constant is 6.96 nM.