

For Research Use Only

POLB Recombinant monoclonal antibody, PBS Only

Catalog Number: 86680-2-PBS



Basic Information

Catalog Number: 86680-2-PBS	GenBank Accession Number: BC100288	Purification Method: Protein A purification
Size: 100ug, Concentration: 1 mg/ml by Nanodrop;	GeneID (NCBI): 5423	CloneNo.: 251689E10
Source: Rabbit	UNIPROT ID: P06746	
Isotype: IgG	Full Name: polymerase (DNA directed), beta	
Immunogen Catalog Number: AG12496	Calculated MW: 335 aa, 38 kDa	
	Observed MW: 40 kDa	

Applications

Tested Applications:
WB, IF/ICC, Indirect ELISA

Species Specificity:
human, mouse, rat

Background Information

DNA polymerase β (DNA polymerase beta (POLB)) belongs to a member of the DNA polymerase X family, mainly involved in various biological metabolic processes, such as eukaryotic DNA replication, DNA damage repair, gene recombination, and cell cycle regulation (PMID: 38731327).

Storage

Storage:
Store at -80°C .
Storage Buffer:
PBS only, pH7.3

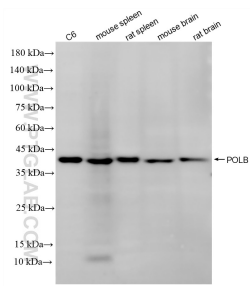
For technical support and original validation data for this product please contact:

T: 1 (888) 4PTGLAB (1-888-478-4522) (toll free in USA), or 1(312) 455-8498 (outside USA)

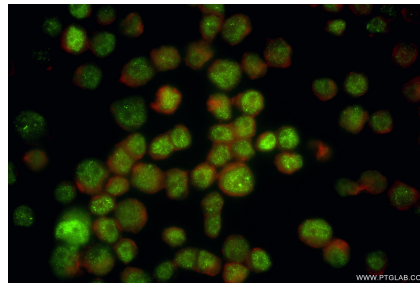
E: proteintech@ptglab.com
W: ptglab.com

This product is exclusively available under Proteintech Group brand and is not available to purchase from any other manufacturer.

Selected Validation Data



Various lysates were subjected to SDS PAGE followed by western blot with 86680-2-RR (POLB antibody) at dilution of 1:2000 incubated at room temperature for 1.5 hours. This data was developed using the same antibody clone with 86680-2-PBS in a different storage buffer formulation.



Immunofluorescent analysis of (4% PFA) fixed COLO 320 cells using POLB antibody (86680-2-RR, Clone: 251689E10) at dilution of 1:500 and CoraLite® 488-Conjugated Goat Anti-Rabbit IgG(H+L) (SA00013-2), CL594-Phalloidin (red). This data was developed using the same antibody clone with 86680-2-PBS in a different storage buffer formulation.