

For Research Use Only

POLB Recombinant monoclonal antibody

Catalog Number: 86680-2-RR



Basic Information

Catalog Number: 86680-2-RR	GenBank Accession Number: BC100288	Purification Method: Protein A purification
Size: 100ul , Concentration: 1000 µg/ml by Nanodrop;	GeneID (NCBI): 5423	CloneNo.: 251689E10
Source: Rabbit	UNIPROT ID: P06746	Recommended Dilutions: WB: 1:1000-1:4000 IF/ICC: 1:250-1:1000
Isotype: IgG	Full Name: polymerase (DNA directed), beta	
Immunogen Catalog Number: AG12496	Calculated MW: 335 aa, 38 kDa	
	Observed MW: 40 kDa	

Applications

Tested Applications: WB, IF/ICC, ELISA	Positive Controls: WB : C6 cells, mouse spleen tissue, rat spleen tissue, mouse brain tissue, rat brain tissue
Species Specificity: human, mouse, rat	IF/ICC : COLO 320 cells,

Background Information

DNA polymerase β (DNA polymerase beta (POLB)) belongs to a member of the DNA polymerase X family, mainly involved in various biological metabolic processes, such as eukaryotic DNA replication, DNA damage repair, gene recombination, and cell cycle regulation (PMID: 38731327).

Storage

Storage:
Store at -20°C. Stable for one year after shipment.
Storage Buffer:
PBS with 0.02% sodium azide and 50% glycerol, pH7.3
Aliquoting is unnecessary for -20°C storage

*** 20ul sizes contain 0.1% BSA

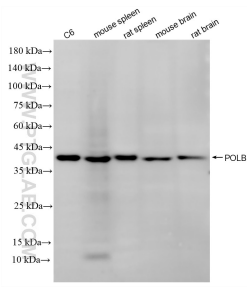
For technical support and original validation data for this product please contact:

T: 1 (888) 4PTGLAB (1-888-478-4522) (toll free in USA), or 1(312) 455-8498 (outside USA)

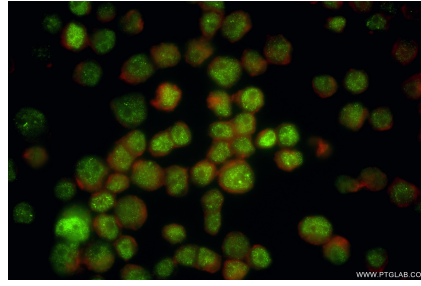
E: proteintech@ptglab.com
W: ptglab.com

This product is exclusively available under Proteintech Group brand and is not available to purchase from any other manufacturer.

Selected Validation Data



Various lysates were subjected to SDS PAGE followed by western blot with 86680-2-RR (POLB antibody) at dilution of 1:2000 incubated at room temperature for 1.5 hours.



Immunofluorescent analysis of (4% PFA) fixed COLO 320 cells using POLB antibody (86680-2-RR, Clone: 251689E10) at dilution of 1:500 and CoraLite® 488-Conjugated Goat Anti-Rabbit IgG(H+L) (SA00013-2), CL594-Phalloidin (red).