

For Research Use Only

# MBD3 Recombinant monoclonal antibody, PBS Only (Detector)

Catalog Number:86681-2-PBS



## Basic Information

<b>Catalog Number:</b> 86681-2-PBS	<b>GenBank Accession Number:</b> BC043619	<b>Purification Method:</b> Protein A purification
<b>Size:</b> 100ug , Concentration: 1 mg/ml by Nanodrop;	<b>GeneID (NCBI):</b> 53615	<b>CloneNo.:</b> 250922E11
<b>Source:</b> Rabbit	<b>UNIPROT ID:</b> O95983	
<b>Isotype:</b> IgG	<b>Full Name:</b> methyl-CpG binding domain protein 3	
<b>Immunogen Catalog Number:</b> AG5531	<b>Calculated MW:</b> 33 kDa	
	<b>Observed MW:</b> 35 kDa	

## Applications

**Tested Applications:**  
WB, IF/ICC, Cytometric bead array, Sandwich ELISA, Indirect ELISA

**Species Specificity:**  
human

## Product Information

86681-2-PBS targets MBD3 as part of a matched antibody pair:

MP02598-1: 86681-3-PBS capture and 86681-2-PBS detection (validated in Cytometric bead array)

MP02598-2: 86681-4-PBS capture and 86681-2-PBS detection (validated in Sandwich ELISA)

Unconjugated rabbit recombinant monoclonal antibody in PBS only (BSA and azide free) storage buffer at a concentration of 1 mg/mL, ready for conjugation. Created using Proteintech's proprietary in-house recombinant technology. Recombinant production enables unrivalled batch-to-batch consistency, easy scale-up, and future security of supply.

This conjugation ready format makes antibodies ideal for use in many applications including: ELISAs, multiplex assays requiring matched pairs, mass cytometry, and multiplex imaging applications. Antibody use should be optimized by the end user for each application and assay.

## Background Information

Methyl-CpG-binding domain 3 (Mbd3), a member among the five-MBD protein family, is unique in its ability to specifically recognize 5'-hydroxymethyl-cytosine (5'-hmC), an epigenetic marker that is highly enriched in stem cells and cancer.

## Storage

**Storage:**  
Store at -80°C.

**Storage Buffer:**  
PBS only, pH7.3

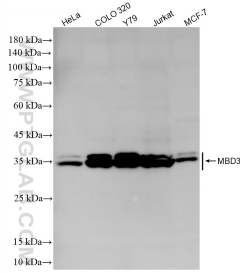
For technical support and original validation data for this product please contact:

T: 1 (888) 4PTGLAB (1-888-478-4522) (toll free in USA), or 1(312) 455-8498 (outside USA)

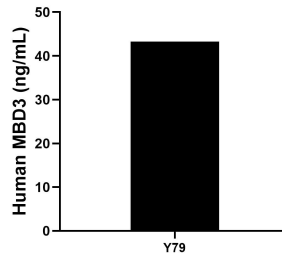
E: [proteintech@ptglab.com](mailto:proteintech@ptglab.com)  
W: [ptglab.com](http://ptglab.com)

**This product is exclusively available under Proteintech Group brand and is not available to purchase from any other manufacturer.**

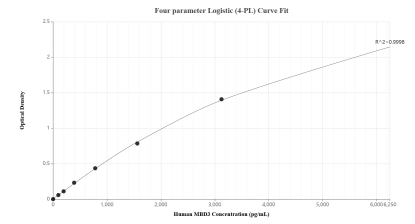
## Selected Validation Data



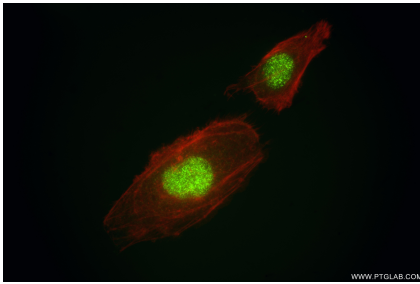
Various lysates were subjected to SDS PAGE followed by western blot with 86681-2-RR (MBD3 antibody) at dilution of 1:5000 incubated at room temperature for 1.5 hours. This data was developed using the same antibody clone with 86681-2-PBS in a different storage buffer formulation.



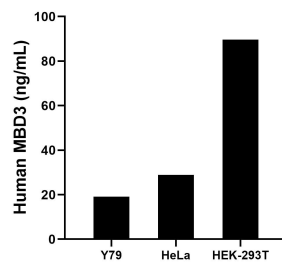
The mean MBD3 concentration was determined to be 43.2 ng/mL in Y79 cell extract based on a 1.1 mg/mL extract load.



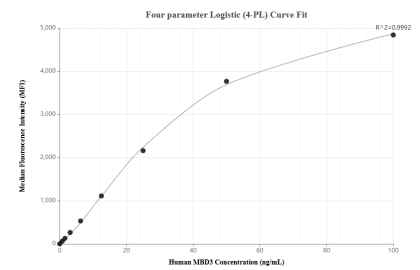
Sandwich ELISA standard curve of MP02598-2, Human MBD3 Recombinant Matched Antibody Pair - PBS only. 86681-4-PBS was coated to a plate as the capture antibody and incubated with serial dilutions of standard Ag5531. 86681-2-PBS was HRP conjugated as the detection antibody. Range: 97.7-6250 pg/mL.



Immunofluorescent analysis of (4% PFA) fixed HeLa cells using MBD3 antibody (86681-2-RR, Clone: 250922E11) at dilution of 1:800 and CoraLite@488-Conjugated Goat Anti-Rabbit IgG(H+L) (SA00013-2), CL594-Phalloidin (red). This data was developed using the same antibody clone with 86681-2-PBS in a different storage buffer formulation.



The mean MBD3 concentration was determined to be 19.2 ng/mL in Y79 cell extract based on a 1.1 mg/mL extract load, 28.9 ng/mL in HeLa cell extract based on a 1.2 mg/mL extract load, 89.6 ng/mL in HEK-293 cell extract based on a 3.2 mg/mL extract load.



Cytometric bead array standard curve of MP02598-1, MBD3 Recombinant Matched Antibody Pair, PBS Only. Capture antibody: 86681-3-PBS. Detection antibody: 86681-2-PBS. Standard: Ag5531. Range: 0.781-100 ng/mL.