

For Research Use Only

# MBD3 Recombinant monoclonal antibody

Catalog Number: 86681-2-RR



## Basic Information

<b>Catalog Number:</b> 86681-2-RR	<b>GenBank Accession Number:</b> BC043619	<b>Purification Method:</b> Protein A purification
<b>Size:</b> 100ul , Concentration: 1000 µg/ml by Nanodrop;	<b>GeneID (NCBI):</b> 53615	<b>CloneNo.:</b> 250922E11
<b>Source:</b> Rabbit	<b>UNIPROT ID:</b> O95983	<b>Recommended Dilutions:</b> WB: 1:2000-1:10000 IF/ICC: 1:400-1:1600
<b>Isotype:</b> IgG	<b>Full Name:</b> methyl-CpG binding domain protein 3	
<b>Immunogen Catalog Number:</b> AG5531	<b>Calculated MW:</b> 33 kDa	
	<b>Observed MW:</b> 35 kDa	

## Applications

<b>Tested Applications:</b> WB, IF/ICC, ELISA	<b>Positive Controls:</b>
<b>Species Specificity:</b> human	<b>WB :</b> HeLa cells, COLO 320 cells, Y79 cells, Jurkat cells, MCF-7 cells <b>IF/ICC :</b> HeLa cells,

## Background Information

Methyl-CpG-binding domain 3 (Mbd3), a member among the five-MBD protein family, is unique in its ability to specifically recognize 5'-hydroxymethyl-cytosine (5'-hmC), an epigenetic marker that is highly enriched in stem cells and cancer.

## Storage

**Storage:**  
Store at -20°C. Stable for one year after shipment.  
**Storage Buffer:**  
PBS with 0.02% sodium azide and 50% glycerol, pH7.3  
**Aliquoting is unnecessary for -20°C storage**

\*\*\* 20ul sizes contain 0.1% BSA

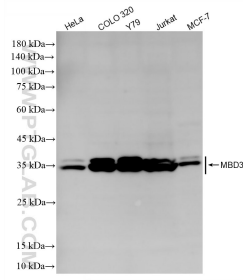
For technical support and original validation data for this product please contact:

T: 1 (888) 4PTGLAB (1-888-478-4522) (toll free in USA), or 1(312) 455-8498 (outside USA)

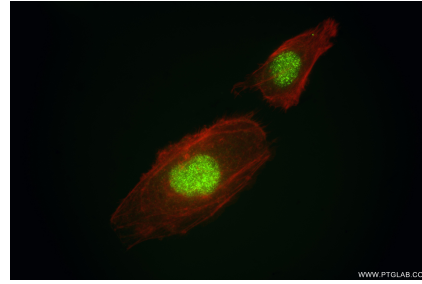
E: [proteintech@ptglab.com](mailto:proteintech@ptglab.com)  
W: [ptglab.com](http://ptglab.com)

This product is exclusively available under Proteintech Group brand and is not available to purchase from any other manufacturer.

## Selected Validation Data



Various lysates were subjected to SDS PAGE followed by western blot with 86681-2-RR (MBD3 antibody) at dilution of 1:5000 incubated at room temperature for 1.5 hours.



Immunofluorescent analysis of (4% PFA) fixed HeLa cells using MBD3 antibody (86681-2-RR, Clone: 250922E11) at dilution of 1:800 and CoraLite® 488-Conjugated Goat Anti-Rabbit IgG(H+L) (SA00013-2), CL594-Phalloidin (red).