

For Research Use Only

MBD3 Recombinant monoclonal antibody, PBS Only (Capture)

Catalog Number: 86681-4-PBS



Basic Information

Catalog Number: 86681-4-PBS	GenBank Accession Number: BC043619	Purification Method: Protein A purification
Size: 100ug , Concentration: 1 mg/ml by Nanodrop;	GeneID (NCBI): 53615	CloneNo.: 250922A10
Source: Rabbit	UNIPROT ID: O95983	
Isotype: IgG	Full Name: methyl-CpG binding domain protein 3	
Immunogen Catalog Number: AG5531	Calculated MW: 33 kDa	

Applications

Tested Applications:
Sandwich ELISA, Indirect ELISA

Species Specificity:
human

Product Information

86681-4-PBS targets MBD3 as part of a matched antibody pair:

MP02598-2: 86681-4-PBS capture and 86681-2-PBS detection (validated in Sandwich ELISA)

Unconjugated rabbit recombinant monoclonal antibody in PBS only (BSA and azide free) storage buffer at a concentration of 1 mg/mL, ready for conjugation. Created using Proteintech's proprietary in-house recombinant technology. Recombinant production enables unrivalled batch-to-batch consistency, easy scale-up, and future security of supply.

This conjugation ready format makes antibodies ideal for use in many applications including: ELISAs, multiplex assays requiring matched pairs, mass cytometry, and multiplex imaging applications. Antibody use should be optimized by the end user for each application and assay.

Storage

Storage:
Store at -80°C.

Storage Buffer:
PBS only, pH7.3

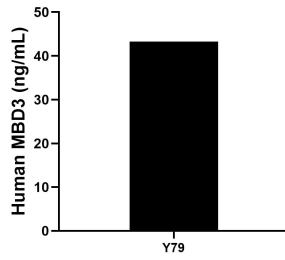
For technical support and original validation data for this product please contact:

T: 1 (888) 4PTGLAB (1-888-478-4522) (toll free in USA), or 1(312) 455-8498 (outside USA)

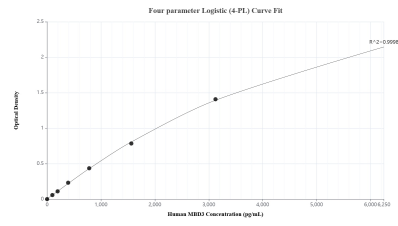
E: proteintech@ptglab.com
W: ptglab.com

This product is exclusively available under Proteintech Group brand and is not available to purchase from any other manufacturer.

Selected Validation Data



The mean MBD3 concentration was determined to be 43.2 ng/mL in Y79 cell extract based on a 1.1 mg/mL extract load.



Sandwich ELISA standard curve of MP02598-2, Human MBD3 Recombinant Matched Antibody Pair - PBS only. 86681-4-PBS was coated to a plate as the capture antibody and incubated with serial dilutions of standard Ag5531. 86681-2-PBS was HRP conjugated as the detection antibody. Range: 97.7-6250 pg/mL.