

For Research Use Only

Mouse PTPRZ Recombinant monoclonal antibody, PBS Only (Capture/Detector)

Catalog Number:86687-3-PBS



Basic Information

Catalog Number: 86687-3-PBS	GenBank Accession Number: NM_001081306.1	Purification Method: Protein A purification
Size: 100ug , Concentration: 1 mg/ml by Nanodrop;	GeneID (NCBI): 19283	CloneNo.: 251663D6
Source: Rabbit	UNIPROT ID: B9EKR1	
Isotype: IgG	Full Name: protein tyrosine phosphatase, receptor type Z, polypeptide 1	
Immunogen Catalog Number: EG6825	Calculated MW: 254 kDa	

Applications

Tested Applications:
Cytometric bead array, Sandwich ELISA, Indirect ELISA

Species Specificity:
mouse

Product Information

86687-3-PBS targets PTPRZ as part of a matched antibody pair:

MP02599-1: 86687-3-PBS capture and 86687-2-PBS detection (validated in Cytometric bead array)

MP02599-2: 86687-1-PBS capture and 86687-3-PBS detection (validated in Sandwich ELISA)

Unconjugated rabbit recombinant monoclonal antibody in PBS only (BSA and azide free) storage buffer at a concentration of 1 mg/mL, ready for conjugation. Created using Proteintech's proprietary in-house recombinant technology. Recombinant production enables unrivalled batch-to-batch consistency, easy scale-up, and future security of supply.

This conjugation ready format makes antibodies ideal for use in many applications including: ELISAs, multiplex assays requiring matched pairs, mass cytometry, and multiplex imaging applications. Antibody use should be optimized by the end user for each application and assay.

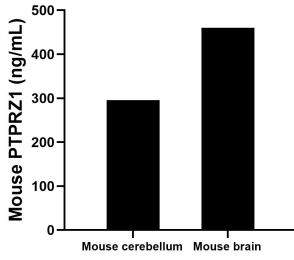
Storage

Storage:
Store at -80°C.
Storage Buffer:
PBS only, pH7.3

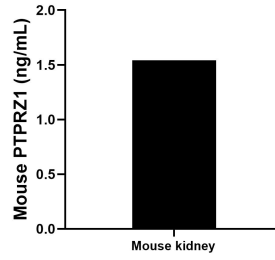
For technical support and original validation data for this product please contact:
T: 1 (888) 4PTGLAB (1-888-478-4522) (toll free in USA), or 1(312) 455-8498 (outside USA) E: proteintech@ptglab.com W: ptglab.com

This product is exclusively available under Proteintech Group brand and is not available to purchase from any other manufacturer.

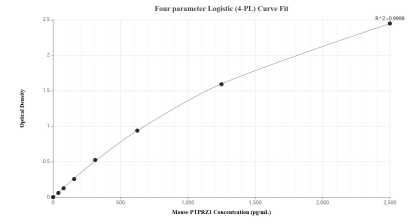
Selected Validation Data



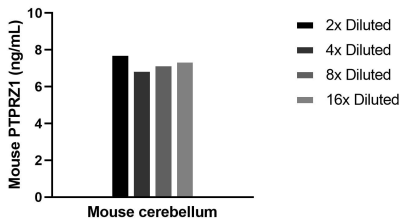
The mean PTPRZ1 concentration was determined to be 295.4 ng/mL in mouse cerebellum tissue extract based on a 2.9 mg/mL extract load and 460.1 ng/mL in mouse brain tissue extract based on a 3.2 mg/mL extract load.



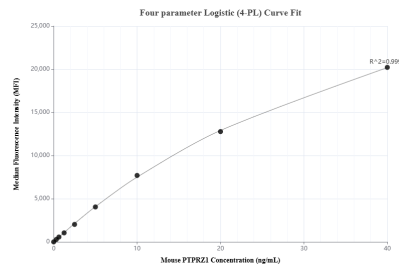
The mean PTPRZ1 concentration was determined to be 1.5 ng/mL in mouse kidney tissue extract based on a 7.8 mg/mL extract load.



Sandwich ELISA standard curve of MP02599-2, Mouse PTPRZ1 Recombinant Matched Antibody Pair - PBS only. 86687-1-PBS was coated to a plate as the capture antibody and incubated with serial dilutions of standard Eg6825. 86687-3-PBS was HRP conjugated as the detection antibody. Range: 39.1-2500 pg/mL.



The mean PTPRZ1 concentration was determined to be 7.3 ng/mL in mouse cerebellum tissue extract based on a 2.9 mg/mL extract load.



Cytometric bead array standard curve of MP02599-1, MOUSE PTPRZ1 Recombinant Matched Antibody Pair, PBS Only. Capture antibody: 86687-3-PBS. Detection antibody: 86687-2-PBS. Standard: Eg6825. Range: 0.312-40 ng/mL.