

For Research Use Only

ERCC6L Recombinant monoclonal antibody, PBS Only (Capture)

Catalog Number: 86688-1-PBS



Basic Information

Catalog Number: 86688-1-PBS	GenBank Accession Number: BC008808	Purification Method: Protein A purification
Size: 100ug , Concentration: 1 mg/ml by Nanodrop;	GeneID (NCBI): 54821	CloneNo.: 251669A8
Source: Rabbit	UNIPROT ID: Q2NIX8	
Isotype: IgG	Full Name: excision repair cross-complementing rodent repair deficiency, complementation group 6-like	
Immunogen Catalog Number: AG8223	Calculated MW: 419 aa, 46 kDa, 141 kDa	
	Observed MW: 180 kDa	

Applications

Tested Applications:
WB, IP, Sandwich ELISA, Indirect ELISA

Species Specificity:
human

Product Information

86688-1-PBS targets ERCC6L as part of a matched antibody pair.

MP02582-2: 86688-1-PBS capture and 86688-2-PBS detection (validated in Sandwich ELISA)

Unconjugated rabbit recombinant monoclonal antibody in PBS only (BSA and azide free) storage buffer at a concentration of 1 mg/mL, ready for conjugation. Created using Proteintech's proprietary in-house recombinant technology. Recombinant production enables unrivalled batch-to-batch consistency, easy scale-up, and future security of supply.

This conjugation ready format makes antibodies ideal for use in many applications including: ELISAs, multiplex assays requiring matched pairs, mass cytometry, and multiplex imaging applications. Antibody use should be optimized by the end user for each application and assay.

Background Information

ERCC6L, also named as Tumor antigen BJ-HCC-15 or PICH, is a 1250 amino acid protein, which contains one helicase ATP-binding domain, one helicase C-terminal domain and two TPR repeats. ERCC6L localizes to kinetochores, inner centromeres and belongs to the SNF2/RAD54 helicase family. ERCC6L as a DNA helicase that acts as an essential component of the spindle assembly checkpoint. The calculated molecular weight of ERCC6L is 140 kDa, but the phosphorylated modification of molecular weight of ERCC6L is about 180kDa.

Storage

Storage:
Store at -80°C.

Storage Buffer:
PBS only, pH7.3

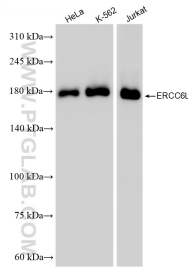
For technical support and original validation data for this product please contact:

T: 1 (888) 4PTGLAB (1-888-478-4522) (toll free in USA), or 1(312) 455-8498 (outside USA)

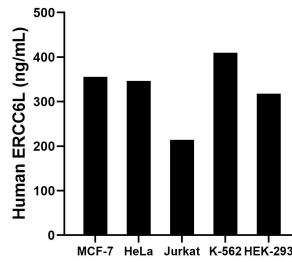
E: proteintech@ptglab.com
W: ptglab.com

This product is exclusively available under Proteintech Group brand and is not available to purchase from any other manufacturer.

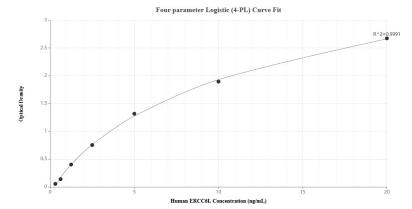
Selected Validation Data



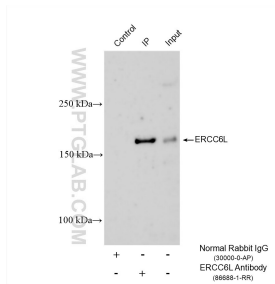
Various lysates were subjected to SDS PAGE followed by western blot with 86688-1-RR (ERCC6L antibody) at dilution of 1:10000 incubated at room temperature for 1.5 hours. This data was developed using the same antibody clone with 86688-1-PBS in a different storage buffer formulation.



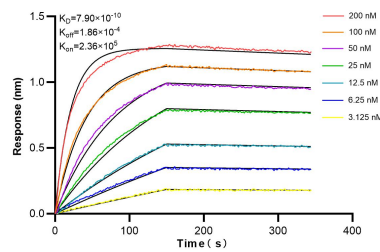
The mean ERCC6L concentration was determined to be 355.50 ng/mL in MCF-7 cell extract based on a 1.2 mg/mL extract load, 346.30 ng/mL in HeLa cell extract based on a 1.2 mg/mL extract load, 214.50 ng/mL in Jurkat cell extract based on a 1.2 mg/mL extract load, 409.90 ng/mL in K-562 cell extract based on a 1.2 mg/mL extract load and 318.20 ng/mL in HEK-293 cell extract based on a 1.2 mg/mL extract load.



Sandwich ELISA standard curve of MP02582-2, Human ERCC6L Recombinant Matched Antibody Pair - PBS only. 86688-1-PBS was coated to a plate as the capture antibody and incubated with serial dilutions of standard Ag8223. 86688-2-PBS was HRP conjugated as the detection antibody. Range: 0.313-20 ng/mL



IP result of anti-ERCC6L (IP:86688-1-RR, 4ug; Detection:86688-1-RR 1:2000) with K-562 cells lysate 1640 ug. This data was developed using the same antibody clone with 86688-1-PBS in a different storage buffer formulation.



Biolayer interferometry (BLI) kinetic assays of 86688-1-RR against Human ERCC6L were performed. The affinity constant is 0.79 nM.