

For Research Use Only

ERCC6L Recombinant monoclonal antibody

Catalog Number:86688-1-RR



Basic Information

| | | |
|--|---|--|
| Catalog Number: 86688-1-RR | GenBank Accession Number: BC008808 | Purification Method: Protein A purification |
| Size: 100ul , Concentration: 1000 µg/ml by Nanodrop; | GeneID (NCBI): 54821 | CloneNo.: 251669A8 |
| Source: Rabbit | UNIPROT ID: Q2NKX8 | Recommended Dilutions: WB: 1:5000-1:50000 IP: 0.5-4.0 ug for 1.0-3.0 mg of total protein lysate |
| Isotype: IgG | Full Name: excision repair cross-complementing rodent repair deficiency, complementation group 6-like | |
| Immunogen Catalog Number: AG8223 | Calculated MW: 419 aa, 46 kDa, 141 kDa | |
| | Observed MW: 180 kDa | |

Applications

| | |
|--|---|
| Tested Applications: WB, IP, ELISA | Positive Controls: WB : HeLa cells, K-562 cells, Jurkat cells |
| Species Specificity: human | IP : K-562 cells, |

Background Information

ERCC6L, also named as Tumor antigen BJ-HCC-15 or PICH, is a 1250 amino acid protein, which contains one helicase ATP-binding domain, one helicase C-terminal domain and two TPR repeats. ERCC6L localizes to kinetochores, inner centromeres and belongs to the SNF2/RAD54 helicase family. ERCC6L as a DNA helicase that acts as an essential component of the spindle assembly checkpoint. The calculated molecular weight of ERCC6L is 140 kDa, but the phosphorylated modification of molecular weight of ERCC6L is about 180kDa.

Storage

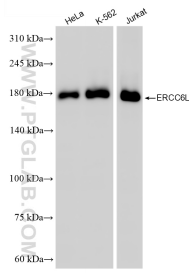
Storage:
Store at -20°C. Stable for one year after shipment.
Storage Buffer:
PBS with 0.02% sodium azide and 50% glycerol, pH7.3
Aliquoting is unnecessary for -20°C storage

*** 20ul sizes contain 0.1% BSA

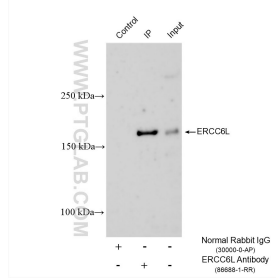
For technical support and original validation data for this product please contact:
T: 1 (888) 4PTGLAB (1-888-478-4522) (toll free in USA), or 1(312) 455-8498 (outside USA)
E: proteintech@ptglab.com
W: ptglab.com

This product is exclusively available under Proteintech Group brand and is not available to purchase from any other manufacturer.

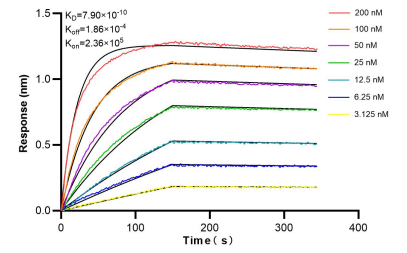
Selected Validation Data



Various lysates were subjected to SDS PAGE followed by western blot with 86688-1-RR (ERCC6L antibody) at dilution of 1:10000 incubated at room temperature for 1.5 hours.



IP result of anti-ERCC6L (IP:86688-1-RR, 4ug; Detection:86688-1-RR 1:2000) with K-562 cells lysate 1640 ug.



Bi-layer interferometry (BLI) kinetic assays of 86688-1-RR against Human ERCC6L were performed. The affinity constant is 0.79 nM.