

For Research Use Only

CKAP2 Recombinant monoclonal antibody

Catalog Number:86689-1-RR



Basic Information

Catalog Number: 86689-1-RR	GenBank Accession Number: BC136332	Purification Method: Protein A purification
Size: 100ul , Concentration: 1000 µg/ml by Nanodrop;	GeneID (NCBI): 26586	CloneNo.: 251698F2
Source: Rabbit	UNIPROT ID: Q8WWK9	Recommended Dilutions: WB: 1:2000-1:10000 IF/ICC: 1:400-1:1600
Isotype: IgG	Full Name: cytoskeleton associated protein 2	
Immunogen Catalog Number: AG21901	Calculated MW: 683 aa, 77 kDa	
	Observed MW: 75-85 kDa	

Applications

Tested Applications: WB, IF/ICC, ELISA	Positive Controls: WB : NCI-H1299 cells, SGC-7901 cells, RAW 264.7 cells IF/ICC : HeLa cells,
Species Specificity: human, mouse	

Background Information

Cytoskeleton-associated protein 2 (CKAP2), also known as tumor-associated microtubule-associated protein (TMAP), is implicated in the regulation of cell proliferation (PMID: 30119212). CKAP2 is a MAP expressed during mitosis that localizes to centrosomes and spindles before being targeted for degradation by the anaphase-promoting complex/cyclosome at mitotic exit (PMID: 38381793, 17339342).

Storage

Storage:
Store at -20°C. Stable for one year after shipment.
Storage Buffer:
PBS with 0.02% sodium azide and 50% glycerol, pH7.3
Aliquoting is unnecessary for -20°C storage

*** 20ul sizes contain 0.1% BSA

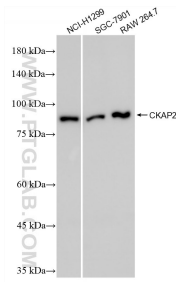
For technical support and original validation data for this product please contact:

T: 1 (888) 4PTGLAB (1-888-478-4522) (toll free in USA), or 1(312) 455-8498 (outside USA)

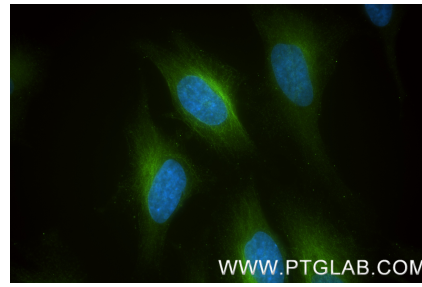
E: proteintech@ptglab.com
W: ptglab.com

This product is exclusively available under Proteintech Group brand and is not available to purchase from any other manufacturer.

Selected Validation Data



Various lysates were subjected to SDS PAGE followed by western blot with 86689-1-RR (CKAP2 antibody) at dilution of 1:5000 incubated at room temperature for 1.5 hours.



Immunofluorescent analysis of (-20°C Methanol) fixed HeLa cells using CKAP2 antibody (86689-1-RR, Clone: 251698F2) at dilution of 1:800 and CoraLite® 488-Conjugated Goat Anti-Rabbit IgG(H+L) (SA00013-2).