

For Research Use Only

# Claudin 3 Recombinant monoclonal antibody, PBS Only

Catalog Number:86697-1-PBS



## Basic Information

Catalog Number:

86697-1-PBS

Size:

100ug, Concentration: 1 mg/ml by Nanodrop;

Source:

Rabbit

Isotype:

IgG

GenBank Accession Number:

BC016056

GeneID (NCBI):

1365

UNIPROT ID:

O15551

Full Name:

claudin 3

Calculated MW:

220 aa, 23 kDa

Observed MW:

20 kDa

Purification Method:

Protein A purification

CloneNo.:

251540A11

## Applications

Tested Applications:

WB, IP, Indirect ELISA

Species Specificity:

human, mouse, rat

## Background Information

Claudin-3 (CLDN3) is one of 27 known members of the claudin family. Together with occludin and other junctional adhesion molecules, the claudins form the tight-junctions (TJs) that regulate intercellular permeability. Altered CLDN3 expression has been linked to tumor progression in multiple tumor types.

## Storage

Storage:

Store at -80°C.

Storage Buffer:

PBS only, pH7.3

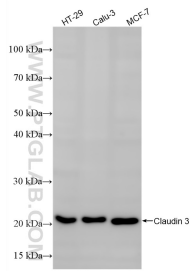
For technical support and original validation data for this product please contact:

T: 1 (888) 4PTGLAB (1-888-478-4522) (toll free in USA), or 1(312) 455-8498 (outside USA)

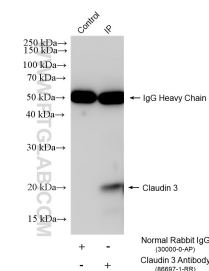
E: [proteintech@ptglab.com](mailto:proteintech@ptglab.com)  
W: [ptglab.com](http://ptglab.com)

This product is exclusively available under Proteintech Group brand and is not available to purchase from any other manufacturer.

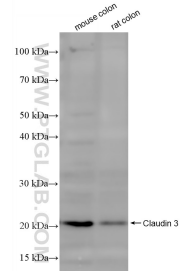
## Selected Validation Data



Various lysates were subjected to SDS PAGE followed by western blot with 86697-1-RR (Claudin 3 antibody) at dilution of 1:10000 incubated at room temperature for 1.5 hours. This data was developed using the same antibody clone with 86697-1-PBS in a different storage buffer formulation.



IP result of anti-Claudin 3 (IP:86697-1-RR, 4ug; Detection:86697-1-RR 1:1000) with HT-29 cells lysate 1760 ug. This data was developed using the same antibody clone with 86697-1-PBS in a different storage buffer formulation.



Various lysates were subjected to SDS PAGE followed by western blot with 86697-1-RR (Claudin 3 antibody) at dilution of 1:10000 incubated at room temperature for 1.5 hours. This data was developed using the same antibody clone with 86697-1-PBS in a different storage buffer formulation.