

For Research Use Only

Claudin 3 Recombinant monoclonal antibody

Catalog Number: 86697-1-RR

1 Publications



Basic Information

Catalog Number:

86697-1-RR

Size:

100ul, Concentration: 1000 µg/ml by Nanodrop;

Source:

Rabbit

Isotype:

IgG

GenBank Accession Number:

BC016056

GeneID (NCBI):

1365

UNIPROT ID:

O15551

Full Name:

claudin 3

Calculated MW:

220 aa, 23 kDa

Observed MW:

20 kDa

Purification Method:

Protein A purification

CloneNo.:

251540A11

Recommended Dilutions:

WB: 1:5000-1:50000

IP: 0.5-4.0 µg for 1.0-3.0 mg of total protein lysate

Applications

Tested Applications:

WB, IP, ELISA

Cited Applications:

WB

Species Specificity:

human, mouse, rat

Cited Species:

mouse

Positive Controls:

WB: HT-29 cells, mouse colon tissue, Calu-3 cells, MCF-7 cells, rat colon tissue

IP: HT-29 cells,

Background Information

Claudin-3 (CLDN3) is one of 27 known members of the claudin family. Together with occludin and other junctional adhesion molecules, the claudins form the tight-junctions (TJs) that regulate intercellular permeability. Altered CLDN3 expression has been linked to tumor progression in multiple tumor types.

Notable Publications

Author	Pubmed ID	Journal	Application
Jing Zhang	41819900	Food Res Int	WB

Storage

Storage:

Store at -20°C. Stable for one year after shipment.

Storage Buffer:

PBS with 0.02% sodium azide and 50% glycerol, pH7.3

Aliquoting is unnecessary for -20°C storage

*** 20ul sizes contain 0.1% BSA

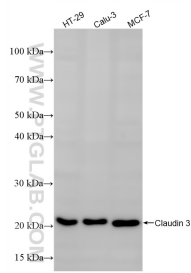
For technical support and original validation data for this product please contact:

T: 1 (888) 4PTGLAB (1-888-478-4522) (toll free in USA), or 1(312) 455-8498 (outside USA)

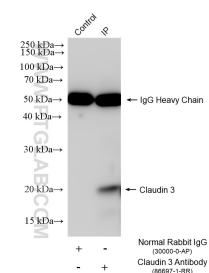
E: proteintech@ptglab.com
W: ptglab.com

This product is exclusively available under Proteintech Group brand and is not available to purchase from any other manufacturer.

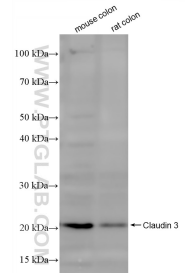
Selected Validation Data



Various lysates were subjected to SDS PAGE followed by western blot with 86697-1-RR (Claudin 3 antibody) at dilution of 1:10000 incubated at room temperature for 1.5 hours.



IP result of anti-Claudin 3 (IP:86697-1-RR, 4ug; Detection:86697-1-RR 1:1000) with HT-29 cells lysate 1760 ug.



Various lysates were subjected to SDS PAGE followed by western blot with 86697-1-RR (Claudin 3 antibody) at dilution of 1:10000 incubated at room temperature for 1.5 hours.