

For Research Use Only

SUPV3L1 Recombinant monoclonal antibody, PBS Only (Capture)

Catalog Number: 86706-1-PBS



Basic Information

Catalog Number: 86706-1-PBS	GenBank Accession Number: BC036112	Purification Method: Protein A purification
Size: 100ug, Concentration: 1 mg/ml by Nanodrop;	GeneID (NCBI): 6832	CloneNo.: 250855G8
Source: Rabbit	UNIPROT ID: Q8IYB8	
Isotype: IgG	Full Name: suppressor of var1, 3-like 1 (S. cerevisiae)	
Immunogen Catalog Number: AG3542	Calculated MW: 786 aa, 88 kDa	
	Observed MW: 70-80 kDa	

Applications

Tested Applications:
WB, IHC, IF/ICC, Cytometric bead array, Indirect ELISA

Species Specificity:
human, mouse, rat

Product Information

86706-1-PBS targets SUPV3L1 as part of a matched antibody pair:

MP02602-1: 86706-1-PBS capture and 86706-3-PBS detection (validated in Cytometric bead array)

Unconjugated rabbit recombinant monoclonal antibody in PBS only (BSA and azide free) storage buffer at a concentration of 1 mg/mL, ready for conjugation. Created using Proteintech's proprietary in-house recombinant technology. Recombinant production enables unrivalled batch-to-batch consistency, easy scale-up, and future security of supply.

This conjugation ready format makes antibodies ideal for use in many applications including: ELISAs, multiplex assays requiring matched pairs, mass cytometry, and multiplex imaging applications. Antibody use should be optimized by the end user for each application and assay.

Background Information

SUPV3L1 is a major helicase player in mitochondrial RNA metabolism. It is involved in the degradation of non-coding mitochondrial transcripts (MT-ncRNA) and tRNA-like molecules (PMID: 29967381).

Storage

Storage:
Store at -80°C.
Storage Buffer:
PBS only, pH7.3

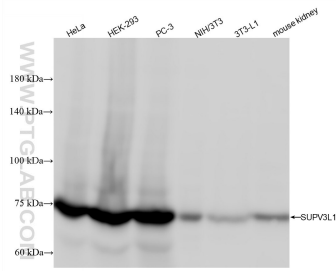
For technical support and original validation data for this product please contact:

T: 1 (888) 4PTGLAB (1-888-478-4522) (toll free in USA), or 1(312) 455-8498 (outside USA)

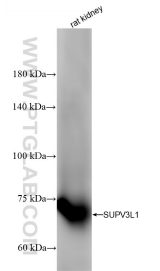
E: proteintech@ptglab.com
W: ptglab.com

This product is exclusively available under Proteintech Group brand and is not available to purchase from any other manufacturer.

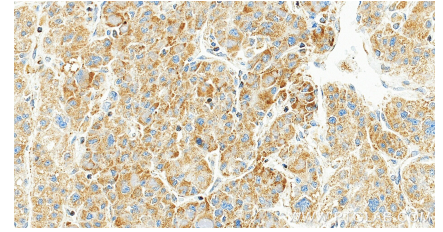
Selected Validation Data



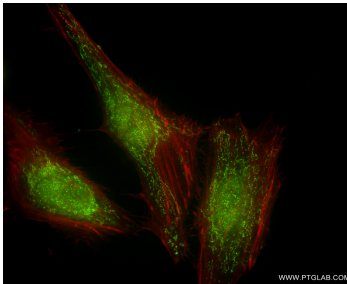
Various lysates were subjected to SDS PAGE followed by western blot with 86706-1-RR (SUPV3L1 antibody) at dilution of 1:10000 incubated at room temperature for 1.5 hours. This data was developed using the same antibody clone with 86706-1-PBS in a different storage buffer formulation.



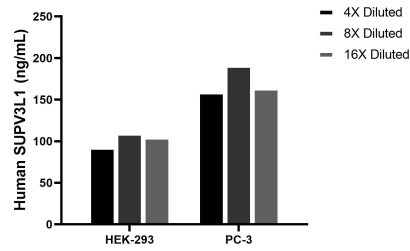
rat kidney tissue were subjected to SDS PAGE followed by western blot with 86706-1-RR (SUPV3L1 antibody) at dilution of 1:10000 incubated at room temperature for 1.5 hours. This data was developed using the same antibody clone with 86706-1-PBS in a different storage buffer formulation.



Immunohistochemical analysis of paraffin-embedded human liver cancer tissue slide using 86706-1-RR (SUPV3L1 antibody) at dilution of 1:1000 (under 20x lens). Heat mediated antigen retrieval with Tris-EDTA buffer (pH 9.0). This data was developed using the same antibody clone with 86706-1-PBS in a different storage buffer formulation.



Immunofluorescent analysis of (4% PFA) fixed HeLa cells using SUPV3L1 antibody (86706-1-RR, Clone: 250855G8) at dilution of 1:200 and CoraLite®488-Conjugated Goat Anti-Rabbit IgG(H+L) (SA00013-2), CL594-Phalloidin (red). This data was developed using the same antibody clone with 86706-1-PBS in a different storage buffer formulation.



The mean SUPV3L1 concentration was determined to be 102.3 ng/mL in HEK-293 cell extract based on a 1.2 mg/mL extract load, 171.2 ng/mL in PC-3 cell extract based on a 1.3 mg/mL extract load.



Cytometric bead array standard curve of MP02602-1, SUPV3L1 Recombinant Matched Antibody Pair, PBS Only. Capture antibody: 86706-1-PBS. Detection antibody: 86706-3-PBS. Standard: Ag3542. Range: 1.562-200 ng/mL