

For Research Use Only

SUPV3L1 Recombinant monoclonal antibody

Catalog Number: 86706-1-RR



Basic Information

Catalog Number: 86706-1-RR	GenBank Accession Number: BC036112	Purification Method: Protein A purification
Size: 100ul , Concentration: 1000 µg/ml by Nanodrop;	GeneID (NCBI): 6832	CloneNo.: 250855G8
Source: Rabbit	UNIPROT ID: Q8IYB8	Recommended Dilutions: WB: 1:5000-1:50000 IHC: 1:500-1:2000 IF/ICC: 1:50-1:500
Isotype: IgG	Full Name: suppressor of var1, 3-like 1 (S. cerevisiae)	
Immunogen Catalog Number: AG3542	Calculated MW: 786 aa, 88 kDa	
	Observed MW: 70-80 kDa	

Applications

Tested Applications:
WB, IHC, IF/ICC, ELISA

Species Specificity:
human, mouse, rat

Note-IHC: suggested antigen retrieval with TE buffer pH 9.0; (*) Alternatively, antigen retrieval may be performed with citrate buffer pH 6.0

Positive Controls:

WB : HeLa cells, rat kidney tissue, HEK-293 cells, PC-3 cells, NIH/3T3 cells, 3T3-L1 cells, mouse kidney tissue

IHC : human liver cancer tissue,

IF/ICC : HeLa cells,

Background Information

SUPV3L1 is a major helicase player in mitochondrial RNA metabolism. It is involved in the degradation of non-coding mitochondrial transcripts (MT-ncRNA) and tRNA-like molecules (PMID: 29967381).

Storage

Storage:

Store at -20°C. Stable for one year after shipment.

Storage Buffer:

PBS with 0.02% sodium azide and 50% glycerol, pH7.3

Aliquoting is unnecessary for -20°C storage

*** 20ul sizes contain 0.1% BSA

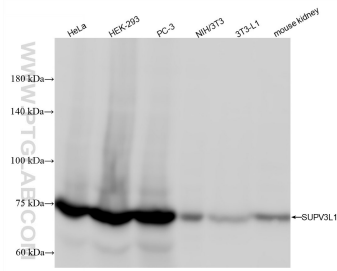
For technical support and original validation data for this product please contact:

T: 1 (888) 4PTGLAB (1-888-478-4522) (toll free in USA), or 1(312) 455-8498 (outside USA)

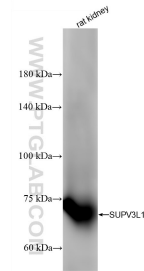
E: proteintech@ptglab.com
W: ptglab.com

This product is exclusively available under Proteintech Group brand and is not available to purchase from any other manufacturer.

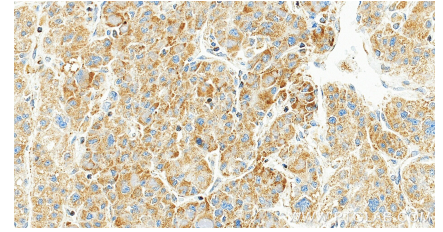
Selected Validation Data



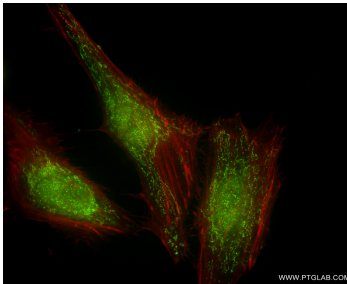
Various lysates were subjected to SDS PAGE followed by western blot with 86706-1-RR (SUPV3L1 antibody) at dilution of 1:10000 incubated at room temperature for 1.5 hours.



rat kidney tissue were subjected to SDS PAGE followed by western blot with 86706-1-RR (SUPV3L1 antibody) at dilution of 1:10000 incubated at room temperature for 1.5 hours.



Immunohistochemical analysis of paraffin-embedded human liver cancer tissue slide using 86706-1-RR (SUPV3L1 antibody) at dilution of 1:1000 (under 20x lens). Heat mediated antigen retrieval with Tris-EDTA buffer (pH 9.0).



Immunofluorescent analysis of (4% PFA) fixed HeLa cells using SUPV3L1 antibody (86706-1-RR, Clone: 250855G8) at dilution of 1:200 and CoraLite@488-Conjugated Goat Anti-Rabbit IgG(H+L) (SA00013-2), CL594-Phalloidin (red).