

For Research Use Only

SUPV3L1 Recombinant monoclonal antibody, PBS Only (Detector)

Catalog Number: 86706-3-PBS



Basic Information

Catalog Number: 86706-3-PBS	GenBank Accession Number: BC036112	Purification Method: Protein A purification
Size: 100ug , Concentration: 1 mg/ml by Nanodrop;	GeneID (NCBI): 6832	CloneNo.: 250855A8
Source: Rabbit	UNIPROT ID: Q8IYB8	
Isotype: IgG	Full Name: suppressor of var1, 3-like 1 (S. cerevisiae)	
Immunogen Catalog Number: AG3542	Calculated MW: 786 aa, 88 kDa	

Applications

Tested Applications:
Cytometric bead array, Sandwich ELISA, Indirect ELISA

Species Specificity:
human

Product Information

86706-3-PBS targets SUPV3L1 as part of a matched antibody pair:

MP02602-1: 86706-1-PBS capture and 86706-3-PBS detection (validated in Cytometric bead array)

MP02602-2: 86706-2-PBS capture and 86706-3-PBS detection (validated in Sandwich ELISA)

Unconjugated rabbit recombinant monoclonal antibody in PBS only (BSA and azide free) storage buffer at a concentration of 1 mg/mL, ready for conjugation. Created using Proteintech's proprietary in-house recombinant technology. Recombinant production enables unrivalled batch-to-batch consistency, easy scale-up, and future security of supply.

This conjugation ready format makes antibodies ideal for use in many applications including: ELISAs, multiplex assays requiring matched pairs, mass cytometry, and multiplex imaging applications. Antibody use should be optimized by the end user for each application and assay.

Storage

Storage:
Store at -80°C.
Storage Buffer:
PBS only, pH7.3

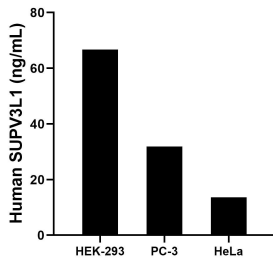
For technical support and original validation data for this product please contact:

T: 1 (888) 4PTGLAB (1-888-478-4522) (toll free in USA), or 1(312) 455-8498 (outside USA)

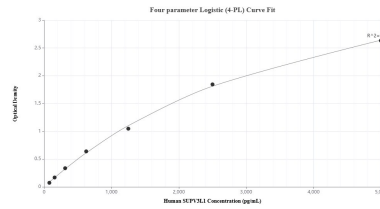
E: proteintech@ptglab.com
W: ptglab.com

This product is exclusively available under Proteintech Group brand and is not available to purchase from any other manufacturer.

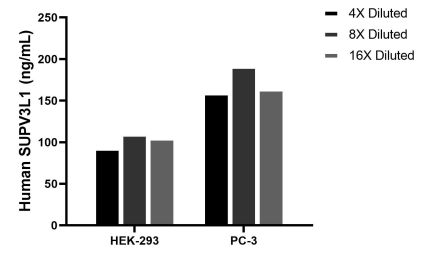
Selected Validation Data



The mean SUPV3L1 concentration was determined to be 66.66 ng/mL in HEK-293 cell extract based on a 1.2 mg/mL extract load, 31.90 ng/mL in PC-3 cell extract based on a 1.3 mg/mL extract load and 13.66 ng/mL in HeLa cell extract based on a 1.2 mg/mL extract load.



Sandwich ELISA standard curve of MP02602-2, Human SUPV3L1 Recombinant Matched Antibody Pair - PBS only. 86706-2-PBS was coated to a plate as the capture antibody and incubated with serial dilutions of standard Ag3542. 86706-3-PBS was HRP conjugated as the detection antibody. Range: 78.1-5000 pg/mL



The mean SUPV3L1 concentration was determined to be 102.3 ng/mL in HEK-293 cell extract based on a 1.2 mg/mL extract load, 171.2 ng/mL in PC-3 cell extract based on a 1.3 mg/mL extract load.



Cytometric bead array standard curve of MP02602-1, SUPV3L1 Recombinant Matched Antibody Pair, PBS Only. Capture antibody: 86706-1-PBS. Detection antibody: 86706-3-PBS. Standard: Ag3542. Range: 1.562-200 ng/mL