

For Research Use Only

GSTP1 Recombinant monoclonal antibody, PBS Only (Capture)

Catalog Number: 86708-3-PBS



Basic Information

Catalog Number: 86708-3-PBS	GenBank Accession Number: BC010915	Purification Method: Protein A purification
Size: 100ug , Concentration: 1 mg/ml by Nanodrop;	GeneID (NCBI): 2950	CloneNo.: 251705C7
Source: Rabbit	UNIPROT ID: P09211	
Isotype: IgG	Full Name: glutathione S-transferase pi 1	
Immunogen Catalog Number: AG8731	Calculated MW: 210 aa, 23 kDa	

Applications

Tested Applications:
Cytometric bead array, Sandwich ELISA, Indirect ELISA

Species Specificity:
human

Product Information

86708-3-PBS targets GSTP1 as part of a matched antibody pair.

MP02614-1: 86708-3-PBS capture and 86708-2-PBS detection (validated in Cytometric bead array, Sandwich ELISA)

Unconjugated rabbit recombinant monoclonal antibody in PBS only (BSA and azide free) storage buffer at a concentration of 1 mg/mL, ready for conjugation. Created using Proteintech's proprietary in-house recombinant technology. Recombinant production enables unrivalled batch-to-batch consistency, easy scale-up, and future security of supply.

This conjugation ready format makes antibodies ideal for use in many applications including: ELISAs, multiplex assays requiring matched pairs, mass cytometry, and multiplex imaging applications. Antibody use should be optimized by the end user for each application and assay.

Storage

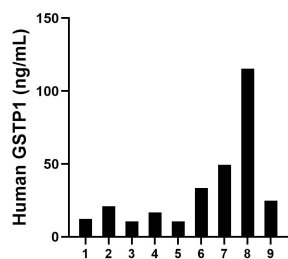
Storage:
Store at -80°C.

Storage Buffer:
PBS only, pH7.3

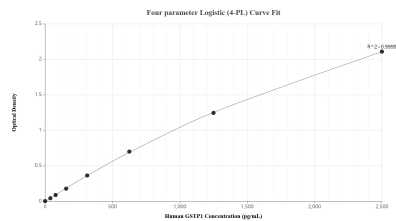
For technical support and original validation data for this product please contact:
T: 1 (888) 4PTGLAB (1-888-478-4522) (toll free in USA), or 1(312) 455-8498 (outside USA)
E: proteintech@ptglab.com
W: ptglab.com

This product is exclusively available under Proteintech Group brand and is not available to purchase from any other manufacturer.

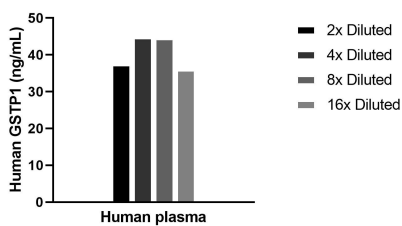
Selected Validation Data



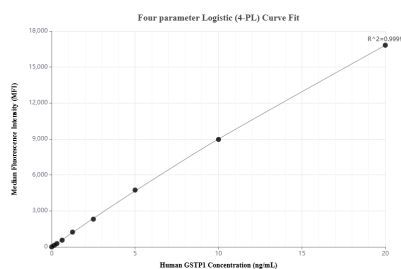
Plasma of nine individual healthy human donors was measured. The GSTP1 concentration of detected samples was determined to be 32.7 ng/mL with a range of 10.5-115.3 ng/mL.



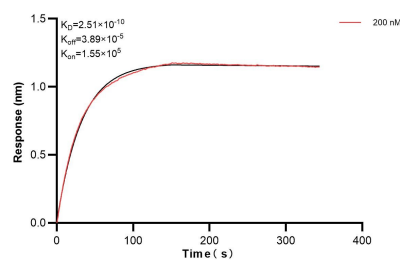
Sandwich ELISA standard curve of MP02614-1, Human GSTP1 Recombinant Matched Antibody Pair - PBS only. 86708-3-PBS was coated to a plate as the capture antibody and incubated with serial dilutions of standard Ag8731. 86708-2-PBS was HRP conjugated as the detection antibody. Range: 39.1-2500 pg/mL.



The mean GSTP1 concentration was determined to be 40.6 ng/mL in Human plasma.



Cytometric bead array standard curve of MP02614-1, GSTP1 Recombinant Matched Antibody Pair, PBS Only. Capture antibody: 86708-3-PBS. Detection antibody: 86708-2-PBS. Standard: Ag8731. Range: 0.156-20 ng/mL.



Biolayer interferometry (BLI) kinetic assay of 86708-3-PBS against Human GSTP1 were performed. The affinity constant is 0.251 nM.