

For Research Use Only

RCN3 Recombinant monoclonal antibody, PBS Only (Capture)

Catalog Number:86710-2-PBS



Basic Information

Catalog Number: 86710-2-PBS	GenBank Accession Number: BC013436	Purification Method: Protein A purification
Size: 100ug , Concentration: 1 mg/ml by Nanodrop;	GeneID (NCBI): 57333	CloneNo.: 251537D12
Source: Rabbit	UNIPROT ID: Q96D15	
Isotype: IgG	Full Name: reticulocalbin 3, EF-hand calcium binding domain	
Immunogen Catalog Number: AG26569	Calculated MW: 37 kDa	

Applications

Tested Applications:
Cytometric bead array, Indirect ELISA

Species Specificity:
human

Product Information

86710-2-PBS targets RCN3 as part of a matched antibody pair:

MP02596-1: 86710-2-PBS capture and 86710-1-PBS detection (validated in Cytometric bead array)

Unconjugated rabbit recombinant monoclonal antibody in PBS only (BSA and azide free) storage buffer at a concentration of 1 mg/mL, ready for conjugation. Created using Proteintech's proprietary in-house recombinant technology. Recombinant production enables unrivalled batch-to-batch consistency, easy scale-up, and future security of supply.

This conjugation ready format makes antibodies ideal for use in many applications including: ELISAs, multiplex assays requiring matched pairs, mass cytometry, and multiplex imaging applications. Antibody use should be optimized by the end user for each application and assay.

Storage

Storage:
Store at -80°C.

Storage Buffer:
PBS only, pH7.3

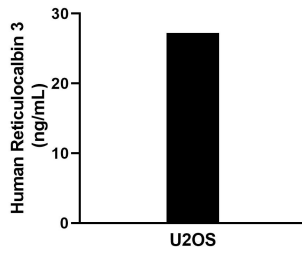
For technical support and original validation data for this product please contact:

T: 1 (888) 4PTGLAB (1-888-478-4522) (toll free in USA), or 1(312) 455-8498 (outside USA)

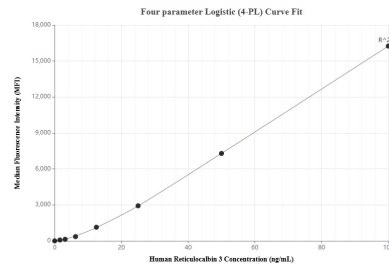
E: proteintech@ptglab.com
W: ptglab.com

This product is exclusively available under Proteintech Group brand and is not available to purchase from any other manufacturer.

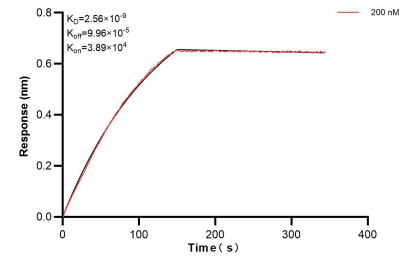
Selected Validation Data



The mean Reticulocalbin 3 concentration was determined to be 27.5 ng/mL in U2OS cell extract based on a 1.3 mg/mL extract load.



Cytometric bead array standard curve of MP02596-1, Reticulocalbin 3 Recombinant Matched Antibody Pair, PBS Only. Capture antibody: 86710-2-PBS. Detection antibody: 86710-1-PBS. Standard: Ag26569. Range: 1.562-100 ng/mL.



Bi-layer interferometry (BLI) kinetic assay of 86710-2-PBS against Human RCN3 was performed. The affinity constant is 2.56 nM.