

For Research Use Only

LIX1L Recombinant monoclonal antibody, PBS Only

Catalog Number: 86712-3-PBS



Basic Information

Catalog Number: 86712-3-PBS	GenBank Accession Number: BC035727	Purification Method: Protein A purification
Size: 100ug , Concentration: 1 mg/ml by Nanodrop;	GeneID (NCBI): 128077	CloneNo.: 251679D2
Source: Rabbit	UNIPROT ID: Q8IVB5	
Isotype: IgG	Full Name: Lix1 homolog (mouse)-like	
Immunogen Catalog Number: AG22209	Calculated MW: 337 aa, 37 kDa	
	Observed MW: 35-40 kDa	

Applications

Tested Applications:
WB, IP, Indirect ELISA

Species Specificity:
human

Background Information

Limb expression 1-like protein (LIX1L) is a putative RNA binding protein that contains a double-stranded RNA-binding motif. LIX1L is highly expressed in various cancer tissues.

Storage

Storage:
Store at -80°C.

Storage Buffer:
PBS only, pH7.3

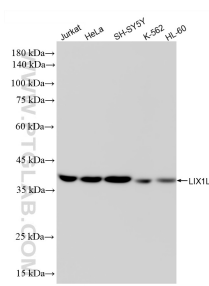
For technical support and original validation data for this product please contact:

T: 1 (888) 4PTGLAB (1-888-478-4522) (toll free in USA), or 1(312) 455-8498 (outside USA)

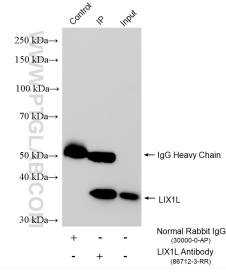
E: proteintech@ptglab.com
W: ptglab.com

This product is exclusively available under Proteintech Group brand and is not available to purchase from any other manufacturer.

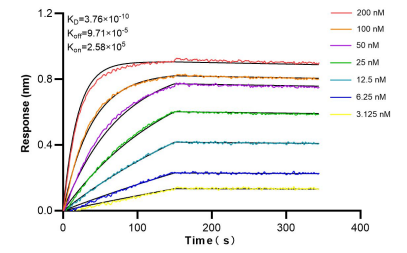
Selected Validation Data



Various lysates were subjected to SDS PAGE followed by western blot with 86712-3-RR (LIX1L antibody) at dilution of 1:10000 incubated at room temperature for 1.5 hours. This data was developed using the same antibody clone with 86712-3-PBS in a different storage buffer formulation.



IP result of anti-LIX1L (IP:86712-3-RR, 4 μ g; Detection:86712-3-RR 1:1500) with Jurkat cells lysate 1800 μ g. This data was developed using the same antibody clone with 86712-3-PBS in a different storage buffer formulation.



Bi-layer interferometry (BLI) kinetic assays of 86712-3-RR against Human LIX1L were performed. The affinity constant is 0.376 nM.