

For Research Use Only

# LIX1L Recombinant monoclonal antibody

Catalog Number: 86712-3-RR



## Basic Information

<b>Catalog Number:</b> 86712-3-RR	<b>GenBank Accession Number:</b> BC035727	<b>Purification Method:</b> Protein A purification
<b>Size:</b> 100ul , Concentration: 1000 µg/ml by Nanodrop;	<b>GeneID (NCBI):</b> 128077	<b>CloneNo.:</b> 251679D2
<b>Source:</b> Rabbit	<b>UNIPROT ID:</b> Q8IVB5	<b>Recommended Dilutions:</b> WB: 1:5000-1:50000 IP: 0.5-4.0 ug for 1.0-3.0 mg of total protein lysate
<b>Isotype:</b> IgG	<b>Full Name:</b> Lix1 homolog (mouse)-like	
<b>Immunogen Catalog Number:</b> AG22209	<b>Calculated MW:</b> 337 aa, 37 kDa	
	<b>Observed MW:</b> 35-40 kDa	

## Applications

<b>Tested Applications:</b> WB, IP, ELISA	<b>Positive Controls:</b>
<b>Species Specificity:</b> human	<b>WB :</b> Jurkat cells, HeLa cells, SH-SY5Y cells, K-562 cells, HL-60 cells <b>IP :</b> Jurkat cells,

## Background Information

Limb expression 1-like protein (LIX1L) is a putative RNA binding protein that contains a double-stranded RNA-binding motif. LIX1L is highly expressed in various cancer tissues.

## Storage

**Storage:**  
Store at -20°C. Stable for one year after shipment.  
**Storage Buffer:**  
PBS with 0.02% sodium azide and 50% glycerol, pH7.3  
**Aliquoting is unnecessary for -20°C storage**

**\*\*\* 20ul sizes contain 0.1% BSA**

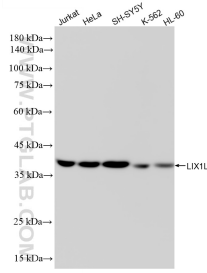
For technical support and original validation data for this product please contact:

T: 1 (888) 4PTGLAB (1-888-478-4522) (toll free in USA), or 1(312) 455-8498 (outside USA)

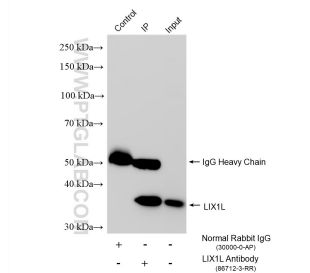
E: [proteintech@ptglab.com](mailto:proteintech@ptglab.com)  
W: [ptglab.com](http://ptglab.com)

**This product is exclusively available under Proteintech Group brand and is not available to purchase from any other manufacturer.**

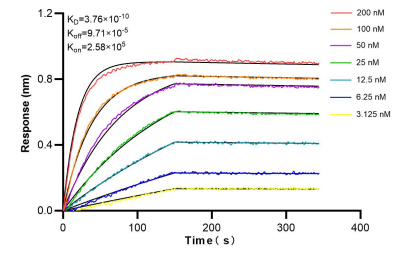
## Selected Validation Data



Various lysates were subjected to SDS PAGE followed by western blot with 86712-3-RR (LIX1L antibody) at dilution of 1:10000 incubated at room temperature for 1.5 hours.



IP result of anti-LIX1L (IP:86712-3-RR, 4 $\mu$ g; Detection:86712-3-RR 1:1500) with Jurkat cells lysate 1800  $\mu$ g.



Bi-layer interferometry (BLI) kinetic assays of 86712-3-RR against Human LIX1L were performed. The affinity constant is 0.376 nM.