

For Research Use Only

APEX1 Recombinant monoclonal antibody, PBS Only (Detector)

Catalog Number: 86719-2-PBS



Basic Information

Catalog Number: 86719-2-PBS	GenBank Accession Number: BC002338	Purification Method: Protein A purification
Size: 100ug , Concentration: 1 mg/ml by Nanodrop;	GeneID (NCBI): 328	CloneNo.: 251693A3
Source: Rabbit	UNIPROT ID: P27695	
Isotype: IgG	Full Name: APEX nuclease (multifunctional DNA repair enzyme) 1	
Immunogen Catalog Number: AG0251	Calculated MW: 36 kDa	

Applications

Tested Applications:
Cytometric bead array, Indirect ELISA

Species Specificity:
human

Product Information

86719-2-PBS targets APEX1 as part of a matched antibody pair:

MP02621-1: 86719-3-PBS capture and 86719-2-PBS detection (validated in Cytometric bead array)

Unconjugated rabbit recombinant monoclonal antibody in PBS only (BSA and azide free) storage buffer at a concentration of 1 mg/mL, ready for conjugation. Created using Proteintech's proprietary in-house recombinant technology. Recombinant production enables unrivalled batch-to-batch consistency, easy scale-up, and future security of supply.

This conjugation ready format makes antibodies ideal for use in many applications including: ELISAs, multiplex assays requiring matched pairs, mass cytometry, and multiplex imaging applications. Antibody use should be optimized by the end user for each application and assay.

Storage

Storage:
Store at -80°C.

Storage Buffer:
PBS only, pH7.3

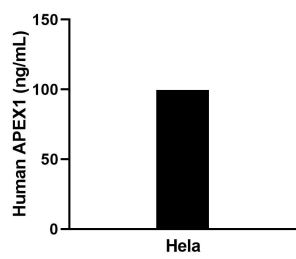
For technical support and original validation data for this product please contact:

T: 1 (888) 4PTGLAB (1-888-478-4522) (toll free in USA), or 1(312) 455-8498 (outside USA)

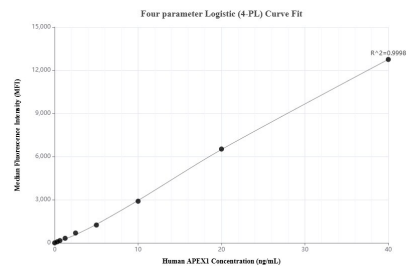
E: proteintech@ptglab.com
W: ptglab.com

This product is exclusively available under Proteintech Group brand and is not available to purchase from any other manufacturer.

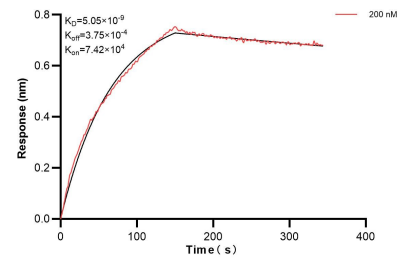
Selected Validation Data



The mean APEX1 concentration was determined to be 101.1 ng/mL in HeLa cell extract based on a 1.2 mg/mL extract load.



Cytometric bead array standard curve of MP02621-1, APEX1 Recombinant Matched Antibody Pair, PBS Only. Capture antibody: 86719-3-PBS. Detection antibody: 86719-2-PBS. Standard: Ag0251. Range: 0.312-40 ng/mL.



Biolayer Interferometry (BLI) kinetic assays of 86719-2-PBS against Human APEX1 were performed. The affinity constant is 5.05 nM.